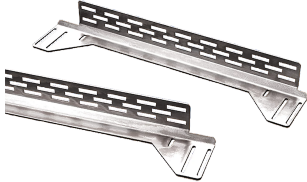


Adjustable Rack-Mounting Rails



Mounting rails allow rack angles to be positioned anywhere within the ProLine frame. The left-to-right adjustment pertains only when the enclosure is wider than the minimum width required for rack angles. Includes two right-hand and two left-hand mounting rails. Mounting hardware is included.

FEATURES

Furnished in set of four, two right-hand and two left-hand; mounting hardware included

Constructed of 12 gauge conductive steel; items ending in 'B' are RAL 9005 black

Rails mount depth-wise (front-to-back)

SPECIFICATIONS

Thickness: 2.66mm

Table 1/1

Catalog Number	Article Number	Material	Fits Frame Depth	Color	Color Code	Finish
PBARA10B	18794	Mild Steel	1000mm	Jet Black	RAL 9005	Powder Coated
PBARA11B	18795	Mild Steel	1100mm	Jet Black	RAL 9005	Powder Coated
PBARA12B	18796	Mild Steel	1200mm	Jet Black	RAL 9005	Powder Coated
PBARA6	34679	Mild Steel	600mm			Plated
PBARA8	34689	Mild Steel	800mm			Plated
PBARA9	34699	Mild Steel	900mm			Plated
PBARA9B	18793	Mild Steel	900mm	Jet Black	RAL 9005	Powder Coated

WARNING

nVent products shall be installed and used only as indicated in nVent's product instruction sheets and training materials. Instruction sheets are available at www.nvent.com and from your nVent customer service representative. Improper installation, misuse, misapplication or other failure to completely follow nVent's instructions and warnings may cause product malfunction, property damage, serious bodily injury and death and/or void your warranty.



Our powerful portfolio of brands:

CADDY ERICO HOFFMAN ILSCO SCHROFF TRACHTE