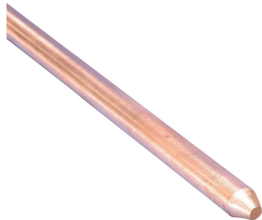


# Solid Copper Ground Rod, Pointed



## CERTIFICATIONS



## FEATURES

Solid copper ground rods made of high conductive hard drawn bare copper

## SPECIFICATIONS

**Material:** Copper  
**Tensile Strength:** 290 MPa Min

Table 1/1

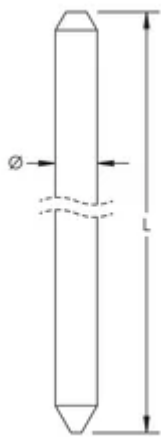
Catalog Number	Ground Rod Diameter, Nominal	Ground Rod Diameter, Actual (Ø)	Length (L)	Unit Weight	Certifications
LPC700	1/2"	12.7 mm	2.44mm	2.76 kg	UL
LPC702	1/2"	12.7 mm	3.05mm	3.44 kg	cUL, UL
LPC704	5/8"	15.9 mm	2.44mm	4.29 kg	UL

Catalog Number	Ground Rod Diameter, Nominal	Ground Rod Diameter, Actual (Ø)	Length (L)	Unit Weight	Certifications
LPC706	5/8"	15.9 mm	3.05mm	5.35 kg	UL, cUL
LPC711	3/4"	19.1 mm	3.05mm	7.7 kg	UL, cUL

ADDITIONAL PRODUCT DETAILS

Due to the inherent softness of the copper material, special consideration should be given when driving this product into the soil.

DIAGRAMS



WARNING

nVent products shall be installed and used only as indicated in nVent's product instruction sheets and training materials. Instruction sheets are available at [www.nvent.com](http://www.nvent.com) and from your nVent customer service representative. Improper installation, misuse, misapplication or other failure to completely follow nVent's instructions and warnings may cause product malfunction, property damage, serious bodily injury and death and/or void your warranty.

#### North America

+1.800.753.9221

Option 1 – Customer Care

Option 2 – Technical

Support

#### Europe

Netherlands:

+31 800-0200135

France:

+33 800 901 793

#### Europe

Germany:

800 1890272

Other Countries:

+31 13 5835404

#### APAC

Shanghai:

+ 86 21 2412 1618/19

Sydney:

+61 2 9751 8500



Our powerful portfolio of brands:

**CADDY**

**ERICO**

**HOFFMAN**

**ILSCO**

**SCHROFF**

**TRACHTE**