

# Rail Track Connector Bond, Multi-Leg



The Rail Track Connector Bond, Multi-Leg is designed for rail wayside signaling applications. This solution is designed to allow multiple connections to rail in highly congested areas of track while safely maintaining rail integrity. Connections to the rail can be made via nVent ERICO Cadweld exothermic connection or nVent ERICO plug bond connection.

## FEATURES

Helps maintain safety and rail integrity

Minimizes downtime on track due to maintenance

Easily make future connections in high-congestion areas

Patent pending customized solution to meet a wide variety of applications

Factory-made nVent ERICO Cadweld connection for superior reliability

Existing equipment and molds can be used for the connection

## SPECIFICATIONS

**Material:** Copper Magnesium

**Finish:** Tinned

Table 1/2

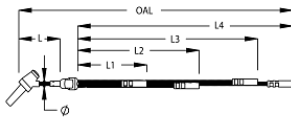
Catalog Number	Bond Terminal Style	Conductor Size	Connector Conductor Size	Diameter (Ø)	Length (L)	Length 1 (L1)
SBSPL3S4CR24 B	Plug	3/16" Bondstrand	3/16" Bondstrand	4.8 mm	76.2mm	101.6 mm
SBSTB3S2CR7B	Tab	3/16" Bondstrand	3/16" Bondstrand	4.8 mm	50.8mm	63.5 mm
SBSCR3S2CR8 B	Crimp	3/16" Bondstrand	3/16" Bondstrand	4.8 mm	76.2mm	63.5 mm

CatalogNumber	Bond Terminal Style	Conductor Size	Connector Conductor Size	Diameter (Ø)	Length (L)	Length 1 (L1)
SBSTB3E2CR7B	Tab	3/16" Bondstrand	3/16" Bondstrand	4.8 mm	50.8mm	114.3 mm

Table 2/2

Catalog Number	Length 2 (L2)	Length 3 (L3)	Length 4 (L4)	Overall Length metric
SBSPL3S4CR24B	203.2 mm	406.4mm	508 mm	609.6mm
SBSTB3S2CR7B	101.6 mm			177.8mm
SBSCR3S2CR8B	101.6 mm			203.2mm
SBSTB3E2CR7B	114.3 mm			190.5mm

## DIAGRAMS



## WARNING

nVent products shall be installed and used only as indicated in nVent's product instruction sheets and training materials. Instruction sheets are available at [www.nvent.com](http://www.nvent.com) and from your nVent customer service representative. Improper installation, misuse, misapplication or other failure to completely follow nVent's instructions and warnings may cause product malfunction, property damage, serious bodily injury and death and/or void your warranty.

### North America

+1.800.753.9221

Option 1 – Customer Care

Option 2 – Technical

Support

### Europe

Netherlands:

+31 800-0200135

France:

+33 800 901 793

### Europe

Germany:

800 1890272

Other Countries:

+31 13 5835404

### APAC

Shanghai:

+ 86 21 2412 1618/19

Sydney:

+61 2 9751 8500



Our powerful portfolio of brands:

CADDY

ERICO

HOFFMAN

ILSCO

SCHROFF

TRACHTE