

# Rail Base Track Circuit Single Shunt, T-Handle



## FEATURES

Easy-to-carry assembly that can be used on most common rail types

Two shunt assemblies are available: "Hard" zero ohm or 0.06 ohm

No resistor to fail: Product is pre-engineered to provide permanent 0.06 ohm shunting

Tested to assure reliability of 0.06 ohm shunt

Black or bright orange insulation available on "Hard" shunt for high visibility and easy identification

Cable welded to terminal clamp

Hardened contact points on clamps bite through rust and scale

Unique design assures positive contact and firm grip

T-shaped handle allows quick and easy tightening by hand

## SPECIFICATIONS

**Material:** Cadmium Bronze;Steel;Polyvinylchloride

Table 1/2

Catalog Number	Color	Length (L)	Width (W)	Height (H)	Rail Foot Thickness (RFT)	Shunt
SBB2721CS72	Orange	1830mm	25.4 mm	47.6 mm	15.24 mm Max	Hard (Zero Ohm)
SBB2721F	Transparent	2184mm	25.4 mm	47.6 mm	15.24 mm Max	Tuned (0.06 Ohm)

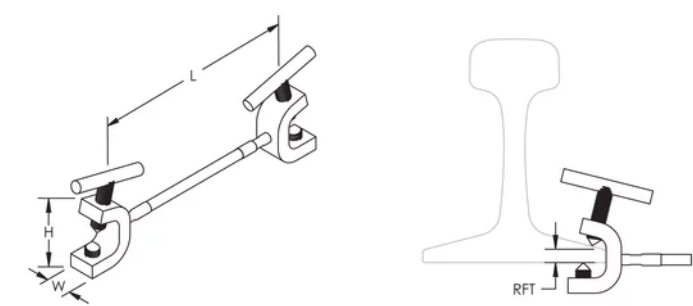
CatalogNumber	Color	Length (L)	Width (W)	Height (H)	Rail Foot Thickness (RFT)	Shunt
SBB2721YS72	Black	1830mm	25.4 mm	47.6 mm	15.24 mm Max	Hard (Zero Ohm)

Table 2/2		
Catalog Number	Conductor Size	Number of Contact Points
SBB2721CS72	3/16" Bondstrand	3
SBB2721F	5/32" Stranded	3
SBB2721YS72	3/16" Bondstrand	2

### ADDITIONAL PRODUCT DETAILS

In order to meet the electrical requirements of 0.06 Ohms, the manufactured length may be longer than the indicated length.

### DIAGRAMS



### WARNING

nVent products shall be installed and used only as indicated in nVent's product instruction sheets and training materials. Instruction sheets are available at [www.nvent.com](http://www.nvent.com) and from your nVent customer service representative. Improper installation, misuse, misapplication or other failure to completely follow nVent's instructions and warnings may cause product malfunction, property damage, serious bodily injury and death and/or void your warranty.

⚠ WARNING: This product can expose you to chemicals including cadmium and vinyl chloride, which is known to the State of California to cause cancer and birth defects or other reproductive harm. For more information go to [www.P65Warnings.ca.gov](http://www.P65Warnings.ca.gov).

#### North America

+1.800.753.9221

Option 1 – Customer Care

Option 2 – Technical

Support

#### Europe

Netherlands:

+31 800-0200135

France:

+33 800 901 793

#### Europe

Germany:

800 1890272

Other Countries:

+31 13 5835404

#### APAC

Shanghai:

+ 86 21 2412 1618/19

Sydney:

+61 2 9751 8500



Our powerful portfolio of brands:

**CADDY**

**ERICO**

**HOFFMAN**

**ILSCO**

**SCHROFF**

**TRACHTE**