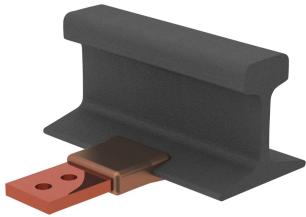
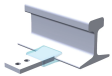


Lug to Rail



nVent ERICO Cadweld applications for railway properties utilize the nVent ERICO Cadweld Plus F80 and the nVent ERICO Cadweld F80 welding material alloys. nVent ERICO Cadweld exothermically welded connections are engineered to provide a permanent, molecular bond that will not loosen or corrode, enabling connection of dissimilar materials. The connections are designed to perform for the life of the conductor and/or installation. The nVent ERICO Cadweld connection has a current carrying capacity equal to or greater than that of the conductor and will withstand repeated fault currents without failing during operation. Once completed, installers can clearly ensure quality by visually inspecting the new connection.

DIAGRAMS



FEATURES

Forms a permanent, low resistance connection

Provides a molecular bond

nVent ERICO Cadweld Exothermic Connections are rated with the same current capacity as the conductor

Portable installation equipment with no external source of power required

Installers can be easily trained to make nVent ERICO Cadweld Exothermic Connections

Connections can be visually inspected

SPECIFICATIONS

Table 1/1

| Catalog Number | Mold Family | Lug/Busbar Size | Rail Type |
|----------------|-------------|-----------------|-----------------|
| PB72QVJH84C | QV | 1/2" x 2" | 84 lb Composite |
| PB72XLQVJH84CS | QV | 1/2" x 2" | 84 lb Composite |

| Catalog Number | Mold Family | Lug/Busbar Size | Rail Type |
|-----------------|-------------|-----------------|---------------------------|
| PB80QVJHV | QV | 1/2" x 2" | 150 lb Inverted Bethlehem |
| PB80QVJHVM | QV | 1/2" x 2" | 150 lb Inverted Bethlehem |
| PBXL72QVJH150BS | QV | 1/2" x 2" | 150 lb Bethlehem |

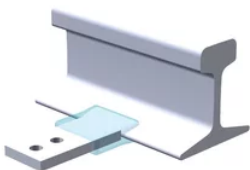
ADDITIONAL PRODUCT DETAILS

For applications such as computer room, tunnel or other low-ventilation areas, specify a smokeless nVent ERICO Cadweld Exolon mold. Add an XL prefix to the standard mold part number when ordering (for example, a PB10GR162G becomes XLPB10GR162G). Similarly, nVent ERICO Cadweld Exolon welding material is also designated by the XL prefix (for example, PB90 becomes XLPB90).

| XXXX-XX-XX-XX-L-M-W | | |
|---------------------|-----------------|---|
| XXXX | Price Key | |
| XX | Mold Family | |
| XX | Lug/Busbar Size | |
| XX | Rail Type | |
| L* | Split Crucible | Crucible section is split on molds designed with horizontal opening for easier cleaning |
| M* | Mold Only | |
| W* | Wear Plates | Reduce mechanical abrasion of molds at cable entry points |

* Empty if none

DIAGRAMS



WARNING

nVent products shall be installed and used only as indicated in nVent's product instruction sheets and training materials. Instruction sheets are available at www.nvent.com and from your nVent customer service representative. Improper installation, misuse, misapplication or other failure to completely follow nVent's instructions and warnings may cause product malfunction, property damage, serious bodily injury and death and/or void your warranty.

North America

+1.800.753.9221

Option 1 – Customer Care

Option 2 – Technical

Support

Europe

Netherlands:

+31 800-0200135

France:

+33 800 901 793

Europe

Germany:

800 1890272

Other Countries:

+31 13 5835404

APAC

Shanghai:

+ 86 21 2412 1618/19

Sydney:

+61 2 9751 8500



Our powerful portfolio of brands:

CADDY

ERICO

HOFFMAN

ILSCO

SCHROFF

TRACHTE