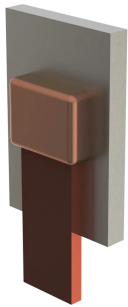
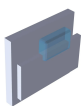


# Lug or Busbar to Steel



nVent ERICO Cadweld graphite molds are designed and engineered for thousands of connection styles and conductor combinations.

## DIAGRAMS



## FEATURES

Forms a permanent, low resistance connection

Provides a molecular bond

nVent ERICO Cadweld Exothermic Connections are rated with the same current capacity as the conductor

Portable installation equipment with no external source of power required

Installers can be easily trained to make nVent ERICO Cadweld Exothermic Connections

Connections can be visually inspected

## SPECIFICATIONS

Table 1/1

Catalog Number	Article Number	Mold Family	Lug/Busbar Size	Connects To
BWCAF		BW	1/16" x 1 1/4"	Steel Surface
BWDJH		BW	1/2" x 2"	Steel Surface
HLCEG		HL	1/4" x 1 1/2"	Steel Surface

Catalog Number	Article Number	Mold Family	Lug/Busbar Size	Connects To
BWCEF		BW	1/4" x 1 1/4"	Steel Surface
CGCEF		CG	1/4" x 1 1/4"	Steel Surface
CGDEH		CG	1/4" x 2"	Steel Surface
DFFEHLH		DF	1/4" x 2"	Steel Surface
CCCEH		CC	1/4" x 2" and wider	Steel Surface
CFDEHRH		CF	1/4" x 2" and wider	Steel Surface
CGKEM		CG	1/4" x 4"	Steel Surface
BWCCG		BW	1/8" x 1 1/2"	Steel Surface
BWCBK	240268	BW	2 mm x 30 mm	Steel Surface
CCCBK		CC	2 mm x 30 mm	Steel Surface
CGCBK		CG	2 mm x 30 mm	Steel Surface
CHCBK		CH	2 mm x 30 mm	Steel Surface
BWCCAJ	221730	BW	3 mm x 25 mm	Steel Surface
BWCCAM		BW	3 mm x 50 mm	Steel Surface
CHCDG		CH	3/16" x 1 1/2" and wider	Steel Surface
BWCDE		BW	3/16" x 1"	Steel Surface
CFCDELH		CF	3/16" x 1"	Steel Surface
CGCDE		CG	3/16" x 1"	Steel Surface

Catalog Number	Article Number	Mold Family	Lug/Busbar Size	Connects To
BWCDG		BW	3/16" x 1/2"	Steel Surface
BWCEAL	223701	BW	4 mm x 40 mm	Steel Surface
CGCEAL		CG	4 mm x 40 mm	Steel Surface
CGCFAK	240391	CG	5 mm x 30 mm	Steel Surface
BWCFAL		BW	5 mm x 40 mm	Steel Surface
CHCPAJ		CH	6 mm x 25 mm and wider	Steel Surface
CHCPAL		CH	6 mm x 40 mm and wider	Steel Surface
BWDPAM		BW	6 mm x 50 mm	Steel Surface

## ADDITIONAL PRODUCT DETAILS

For applications such as computer room, tunnel or other low-ventilation areas, specify a smokeless nVent ERICO Cadweld Exolon mold. Add an XL prefix to the standard mold part number when ordering (for example, a TAC2Q2Q becomes XLTAC2Q2Q). Similarly, nVent ERICO Cadweld Exolon welding material is also designated by the XL prefix (for example, 150 becomes XL150).

A test weld should be made to check for the possibility of burn through on thin sections and to determine detrimental metallurgical effects.

XX-X-XX-L-M-W		
XX	Mold Family	
X	Price Key	
XX	Lug/Busbar Size	
L*	Split Crucible	Crucible section is split on molds designed with horizontal opening for easier cleaning
M*	Mold Only	
W*	Wear Plates	Reduce mechanical abrasion of molds at cable entry points

\* Empty if none

## WARNING

nVent products shall be installed and used only as indicated in nVent's product instruction sheets and training materials. Instruction sheets are available at [www.nvent.com](http://www.nvent.com) and from your nVent customer service representative. Improper installation, misuse, misapplication or other failure to completely follow nVent's instructions and warnings may cause

product malfunction, property damage, serious bodily injury and death and/or void your warranty.

**North America**

+1.800.753.9221  
Option 1 – Customer Care  
Option 2 – Technical  
Support

**Europe**

Netherlands:  
+31 800-0200135  
France:  
+33 800 901 793

**Europe**

Germany:  
800 1890272  
Other Countries:  
+31 13 5835404

**APAC**

Shanghai:  
+ 86 21 2412 1618/19  
Sydney:  
+61 2 9751 8500



Our powerful portfolio of brands:

CADDY   ERICO   HOFFMAN   ILSCO   SCHROFF   TRACHTE