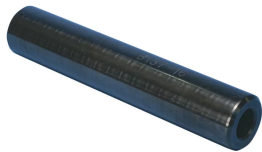


Ground Rod Drive Sleeve for Pointed Ground Rods



FEATURES

For use with unthreaded ground rods

Slides on top of ground rod to prevent mushrooming while driving into ground

SPECIFICATIONS

Ground Rod Type: Copper-bonded;Galvanized;Stainless steel

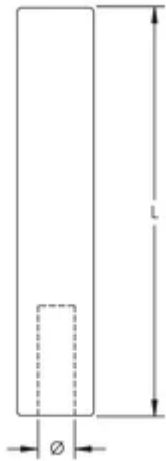
Material: Steel

Table 1/1

Catalog Number	Article Number	Ground Rod Diameter, Nominal	Diameter (Ø)	Length (L)
B13714		1/2"	13.2 mm	152mm
DH12M	158120	1/2"	13.5 mm	100mm
EDS12		1/2"	13.3 mm	64mm
B13716		5/8"	14.7 mm	152mm
EDS58		5/8"	14.7 mm	64mm

Catalog Number	Article Number	Ground Rod Diameter, Nominal	Diameter (Ø)	Length (L)
DH58M	158130	5/8"	16 mm	100mm
B13718		3/4"	17.8 mm	152mm
B13733		3/4"	19.6 mm	152mm
B13722		1"	23.9 mm	152mm
B13737		1"	25.9 mm	152mm

DIAGRAMS



WARNING

nVent products shall be installed and used only as indicated in nVent's product instruction sheets and training materials. Instruction sheets are available at www.nvent.com and from your nVent customer service representative. Improper installation, misuse, misapplication or other failure to completely follow nVent's instructions and warnings may cause product malfunction, property damage, serious bodily injury and death and/or void your warranty.

North America

+1.800.753.9221

Option 1 – Customer Care

Option 2 – Technical

Support

Europe

Netherlands:

+31 800-0200135

France:

+33 800 901 793

Europe

Germany:

800 1890272

Other Countries:

+31 13 5835404

APAC

Shanghai:

+ 86 21 2412 1618/19

Sydney:

+61 2 9751 8500



Our powerful portfolio of brands:

CADDY

ERICO

HOFFMAN

ILSCO

SCHROFF

TRACHTE