

Extension Adaptor for SBHM Hollow Core Metal Tipped Rail Drill Bit



FEATURES

Used to extend the length of the SBHM Hollow Core Metal Tipped Rail Drill Bit when used for drilling holes in grooved rails

3/4" (19 mm) Weldon shank

The length of the adaptor extends the drill bit by 1" (25.4 mm)

Allows for coolant to flow through drill bit

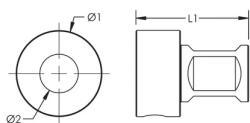
Requires Cooling Adaptor for SSB Double Cutting Twist Type Rail Drill Bit, ADAPZSP (715520)

SPECIFICATIONS

Table 1/1

Catalog Number	Article Number	Material	Diameter 1 (Ø1)	Diameter 2 (Ø2)	Length (L)
ADAPSBHM	716172	Steel	35 mm	19 mm	53mm

DIAGRAMS



WARNING

nVent products shall be installed and used only as indicated in nVent's product instruction sheets and training materials. Instruction sheets are available at www.nvent.com and from your nVent customer service representative. Improper installation, misuse, misapplication or other failure to completely follow nVent's instructions and warnings may cause product malfunction, property damage, serious bodily injury and death and/or void your warranty.

North America

+1.800.753.9221
Option 1 – Customer Care
Option 2 – Technical
Support

Europe

Netherlands:
+31 800-0200135
France:
+33 800 901 793

Europe

Germany:
800 1890272
Other Countries:
+31 13 5835404

APAC

Shanghai:
+ 86 21 2412 1618/19
Sydney:
+61 2 9751 8500



Our powerful portfolio of brands:

CADDY ERICO HOFFMAN ILSCO SCHROFF TRACHTE