

# 1 Hole Lug, GL Style



## FEATURES

Provides an efficient bolting surface for grounding and power applications

Electrolytic grade copper

For use with nVent ERICO Cadweld type GL connections only

## SPECIFICATIONS

**Material:** Copper

**Type:** NEMA®

**Finish:** Tinned

Table 1/2

Catalog Number	Article Number	Height (H)	Length (L)	Width (W)	Thickness (T)	A
B121CE	183650	11.18 mm	36.58mm	25.4 mm	3.18 mm	15.9 mm
B121QQ		11 mm	38.5mm	25.4 mm	3.2 mm	16 mm
B121SQ		11 mm	36.5mm	25.4 mm	4.76 mm	16 mm
B121DE		11.18 mm	37.34mm	25.4 mm	4.76 mm	15.9 mm
B121EG		11.18 mm	38.1mm	38.1 mm	6.35 mm	15.9 mm

CatalogNumber	Article Number	Height (H)	Length (L)	Width (W)	Thickness (T)	A
B121EE		11.18 mm	38.1mm	25.4 mm	6.35 mm	15.9 mm

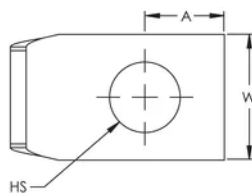
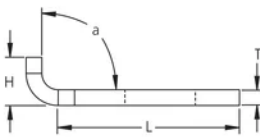
Table 2/2

Catalog Number	Article Number	Hole Size (HS)	Angle (a)	Equivalent Conductor Size
B121CE	183650	14.29 mm	90 °	80.63mm <sup>2</sup>
B121QQ		14.3 mm	90 °	81mm <sup>2</sup>
B121SQ		14 mm	90 °	121mm <sup>2</sup>
B121DE		14.29 mm	105 °	120.94mm <sup>2</sup>
B121EG		14.29 mm	135 °	241.89mm <sup>2</sup>
B121EE		14.29 mm	135 °	161.26mm <sup>2</sup>

## ADDITIONAL PRODUCT DETAILS

For sizes not listed, contact us.

## DIAGRAMS



## WARNING

nVent products shall be installed and used only as indicated in nVent's product instruction sheets and training materials. Instruction sheets are available at [www.nvent.com](http://www.nvent.com) and from your nVent customer service representative. Improper installation, misuse, misapplication or other failure to completely follow nVent's instructions and warnings may cause product malfunction, property damage, serious bodily injury and death and/or void your warranty.

#### North America

+1.800.753.9221

Option 1 – Customer Care

Option 2 – Technical

Support

#### Europe

Netherlands:

+31 800-0200135

France:

+33 800 901 793

#### Europe

Germany:

800 1890272

Other Countries:

+31 13 5835404

#### APAC

Shanghai:

+ 86 21 2412 1618/19

Sydney:

+61 2 9751 8500



Our powerful portfolio of brands:

**CADDY**

**ERICO**

**HOFFMAN**

**ILSCO**

**SCHROFF**

**TRACHTE**