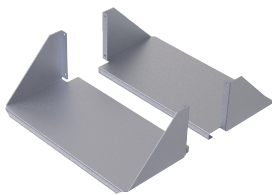


# Double-Sided Solid Aluminum Heavy Duty Shelf

## Data Solutions



The Double-Sided, Solid Aluminum, Heavy Duty Shelf mounts on open-frame rack. It consists of two shelves mounted on each side of the open-frame rack to form a double-sided shelf. It is a heavier duty version of the regular aluminum shelf solution, but contains the lightweight properties of an aluminum construction. It uses 4U rack space with a maximum load rating of 150 lb. (68.0 kg) per side, 300 lb. (136.1 kg) total.

### FEATURES

The Double-Sided, Solid Aluminum, Heavy Duty Shelf mounts on open-frame rack. It consists of two shelves mounted on each side of the open-frame rack to form a double-sided shelf

It is a heavier duty version of the regular aluminum shelf solution, but contains the lightweight properties of an aluminum construction

It uses 4U rack space with a maximum load rating of 150 lb. (68.0 kg) per side, 300 lb. (136.1 kg) total

### SPECIFICATIONS

Table 1/2

| Catalog Number | Article Number | Material | Finish  | Thickness | Rack Units | Height |
|----------------|----------------|----------|---------|-----------|------------|--------|
| ESHDHDA19      | 10251          | Aluminum | Brushed | 2mm       | 4U         | 162mm  |

Table 2/2

| Catalog Number | Article Number | Width | Depth | Includes  |
|----------------|----------------|-------|-------|-----------|
| ESHDHDA19      | 10251          | 506mm | 254mm | 2 Shelves |

### WARNING

nVent products shall be installed and used only as indicated in nVent's product instruction sheets and training materials. Instruction sheets are available at [www.nvent.com](http://www.nvent.com) and from your nVent customer service representative. Improper

installation, misuse, misapplication or other failure to completely follow nVent's instructions and warnings may cause product malfunction, property damage, serious bodily injury and death and/or void your warranty.



Our powerful portfolio of brands:

**CADDY   ERICO   HOFFMAN   ILSCO   SCHROFF   TRACHTE**