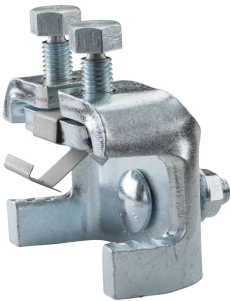


Steel Flange Adapter



This code-compliant Structural Attachment is part of the nVent CADDY line of innovative rigid bracing system, designed to provide superior performance and meet the highest seismic load requirements. Its innovative design allows quick and easy installation onto both top or bottom flange of a wide range of steel I-Beams. Its snap-off bolts make inspection of seismic sway braces simple.

FEATURES

Installs on top or bottom flange of I-beams or bar joists

Low profile easily fits between metal deck and steel structure

Thumb spring retainer allows for ease of positioning

Available pre-assembled to the Universal Structural Bracket, eliminating field assembly

Snap-off bolt head helps enable easy installation and inspection of seismic sway braces

Meets NFPA® 13 as pre-qualified for seismic applications

FM® Specification Tested

SPECIFICATIONS

Material: Steel

Table 1/1

Catalog Number	Finish	Flange Thickness (FT)	A	B	C	D
CSBS1HDN	Hot-Dip Galvanized	6 - 19 mm	21 mm	23 mm	92 mm	67 mm
CSBS1N	Electrogalvanized	6 - 19 mm	21 mm	23 mm	92 mm	67 mm
CSBS2HDN	Hot-Dip Galvanized	19 - 31 mm	23 mm	23 mm	92 mm	79 mm
CSBS2N	Electrogalvanized	19 - 31 mm	23 mm	23 mm	92 mm	79 mm

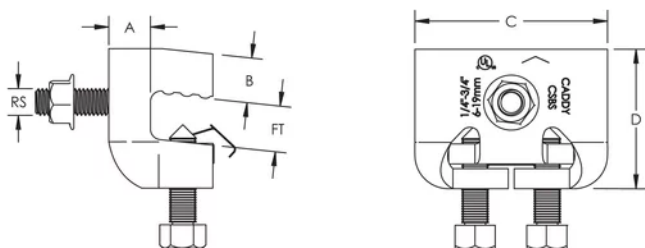
ADDITIONAL PRODUCT DETAILS

Structure Attachment and Brace Member are not included.

UL Loads				
Part Number	Structure Attachment Fitting	Flange Thickness	Brace Member	Load Rating
CSBS1xxx	CSBU1xxx	6 - 8 mm	DN25 - DN50 Sch. 40 NPS	6672 N
		8 - 19 mm		7561 N
	CSBURC12	6 - 19 mm	CSB12CBL	1859 N
			CSB18CBL	3434 N
CSBS2xxx	CSBU1xxx	19 - 31 mm	DN25 - DN50 Sch. 40 NPS	7561 N
			CSB12CBL	1859 N
	CSBURC12	19 - 31 mm	CSB18CBL	3434 N
			CSB36CBL	4893 N
			CSB36CBL	4893 N

FM Loads								
Part Number	Horizontal Capacity per Installation Angle from Vertical							
	Perpendicular to Structure				Parallel to Structure			
	30°- 44°	45°- 59°	60°- 74°	75°- 90°	30°- 44°	45°- 59°	60°- 74°	75°- 90°
CSBS1xxx	3780 N	7910 N	12320 N	12630 N	3910 N	6360 N	8980 N	10720 N
CSBS2xxx	5420 N	9510 N	11470 N	12760 N	4890 N	8090 N	9740 N	11920 N

DIAGRAMS



WARNING

nVent products shall be installed and used only as indicated in nVent's product instruction sheets and training materials. Instruction sheets are available at www.nvent.com and from your nVent customer service representative. Improper installation, misuse, misapplication or other failure to completely follow nVent's instructions and warnings may cause product malfunction, property damage, serious bodily injury and death and/or void your warranty.

North America

+1.800.753.9221

Option 1 – Customer Care

Option 2 – Technical

Support

Europe

Netherlands:

+31 800-0200135

France:

+33 800 901 793

Europe

Germany:

800 1890272

Other Countries:

+31 13 5835404

APAC

Shanghai:

+ 86 21 2412 1618/19

Sydney:

+61 2 9751 8500



Our powerful portfolio of brands:

CADDY ERICO HOFFMAN ILSCO SCHROFF TRACHTE

