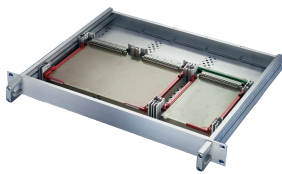


MultipacPRO, Euroboard Mounting Kit for Insulated Backplane

Power Utilities



Euroboards and double euroboards can be mounted horizontally in the 19" chassis using interior mounting kits based on IEC 60297 standard.

CERTIFICATIONS



FEATURES

Euroboards and double euroboards can be mounted horizontally in the 19" chassis using interior mounting kits (IEC 60297)

Scope of delivery is sufficient to mount one 3 U board (euroboard) or one 6 U board (double euroboard)

SPECIFICATIONS

Table 1/1

Catalog Number	Rack Height	Product Family	Product Type	Works With
20860-116	1 U	MultipacPRO	Mounting Kit	Chassis
20860-118	2 U	MultipacPRO	Mounting Kit	Chassis

WARNING

nVent products shall be installed and used only as indicated in nVent's product instruction sheets and training materials. Instruction sheets are available at www.nvent.com and from your nVent customer service representative. Improper installation, misuse, misapplication or other failure to completely follow nVent's instructions and warnings may cause product malfunction, property damage, serious bodily injury and death and/or void your warranty.



Our powerful portfolio of brands:

CADDY ERICO HOFFMAN ILSCO SCHROFF TRACHTE