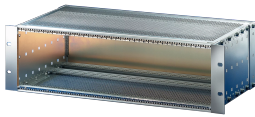


# EuropacPRO 19" Subrack Kit for Backplane, Heavy, Shielded

## Power Utilities

EMC Shielded subrack for backplane mounting, heavy version with tox welded side panels.



## CERTIFICATIONS



## FEATURES

Subrack with side panel type H ("Heavy"), 19" bracket is firmly fixed to side panel (tox-cold welded)

Modifications such as cutouts, different finishes or dimensions available

Supplied as space-saving flat-pack

Aluminum construction

Horizontal rail type "Heavy"

Rear horizontal rail for backplane mounting with insulation strip

EMC of approximately 40 dB at 1 GHz, 30 dB at 2 GHz, assuming that the front is covered with shielded front panels, testing in accordance with VG 95373 part 15

Internal and external dimensions in accordance with: IEC 60297-3-100, -101, IEEE 1101.1

Shock and vibration tested to the German "Bahn" standards BN 411002, BN 411003

IP 20, in accordance with IEC 60529

## SPECIFICATIONS

Table 1/3

Catalog Number	Rack Height	Depth	Package Quantity	For Mounting	Board Depth	EMC Gasket Type
24563-172	3 U	235 mm	1	Backplane	160 mm, 220 mm	Textile
24563-173	3 U	295 mm	1	Backplane	160 mm, 220 mm, 280 mm	Textile
24563-174	3 U	355 mm	1	Backplane	160 mm, 220 mm, 280 mm	Textile
24563-472	6 U	235 mm	1	Backplane	160 mm, 220 mm	Textile
24563-473	6 U	295 mm	1	Backplane	160 mm, 220 mm, 280 mm	Textile
24563-474	6 U	355 mm	1	Backplane	160 mm, 220 mm, 280 mm	Textile

Table 2/3

Catalog Number	Shock and Vibration Tolerance	Handle Included	Mounting	Complies With	EMC Shielding	Product Type
24563-172	5 g (force)	No	Rack	IEC 60297-3-103	Yes	Subrack/Chassis
24563-173	5 g (force)	No	Rack	IEC 60297-3-103	Yes	Subrack/Chassis
24563-174	5 g (force)	No	Rack	IEC 60297-3-103	Yes	Subrack/Chassis
24563-472	5 g (force)	No	Rack	IEC 60297-3-103	Yes	Subrack/Chassis
24563-473	5 g (force)	No	Rack	IEC 60297-3-103	Yes	Subrack/Chassis
24563-474	5 g (force)	No	Rack	IEC 60297-3-103	Yes	Subrack/Chassis

Table 3/3

Catalog Number	Rack Width	Static Load
24563-172	84 HP	15 kgf
24563-173	84 HP	15 kgf

Catalog Number	Rack Width	Static Load
24563-174	84 HP	15 kgf
24563-472	84 HP	15 kgf
24563-473	84 HP	15 kgf
24563-474	84 HP	15 kgf

## ADDITIONAL PRODUCT DETAILS

Individual configuration: broad range of variants in height, width and depth; guide rails for a wide variety of applications; interior options; accessories and mounting material.

## WARNING

nVent products shall be installed and used only as indicated in nVent's product instruction sheets and training materials. Instruction sheets are available at [www.nvent.com](http://www.nvent.com) and from your nVent customer service representative. Improper installation, misuse, misapplication or other failure to completely follow nVent's instructions and warnings may cause product malfunction, property damage, serious bodily injury and death and/or void your warranty.



Our powerful portfolio of brands:

**CADDY ERICO HOFFMAN ILSCO SCHROFF TRACHTE**