

C3SW Side Weldable Half-Coupler, Flat



FEATURES

Designed for connecting reinforcing bar parallel to structural steel sections or plates

Machined from weldable grades of steel

SPECIFICATIONS

Finish: Plain

Material: Steel

Table 1/2

Catalog Number	Rebar Size, Metric	Rebar Size, US	Rebar Size, Canada	Diameter (Ø)	Length (L)	Height 1 (H1)
EL20C3SWN	20 mm	#6	20M	50 mm	108mm	45mm
EL25C3SWN	25 mm	#8	25M	50 mm	118mm	48mm
EL28C3SWN	28 mm	#9	30M	60 mm	118mm	56mm
EL32C3SWN	32 mm	#10		60 mm	118mm	56mm
EL36C3SWN	36 mm	#11	35M	80 mm	118mm	69mm

Table 2/2

Catalog Number	Height 2 (H2)	Bar Depth (BD)	Unit Weight
----------------	---------------	----------------	-------------

EL20C3SWN	19mm	28mm	1.52 kg
EL25C3SWN	21mm	34mm	1.63 kg
EL28C3SWN	25mm	38mm	2.33 kg
EL32C3SWN	25mm	40mm	2.25 kg
EL36C3SWN	30mm	43mm	3.88 kg

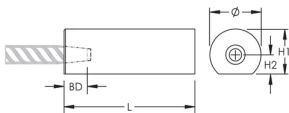
Designed to Meet: AASHTO;ABNT NBR 8548:1984;ACI 318 Type 1 (125% Specified Yield);ACI 318 Type 2 (Specified Tensile);ACI 349;ACI 359;AS3600

ADDITIONAL PRODUCT DETAILS

Bar dimensions and weights listed may vary by region. Coupler sizes not shown may be available by special order. Contact your nVent LENTON representative for more information.

The design of the weld, the selection of electrode, and other relevant choices depend on the chemical and physical properties of the structural steel to which the couplers are welded. Engineers who design assemblies should adhere to all appropriate regulations.

DIAGRAMS



WARNING

nVent products shall be installed and used only as indicated in nVent's product instruction sheets and training materials. Instruction sheets are available at www.nvent.com and from your nVent customer service representative. Improper installation, misuse, misapplication or other failure to completely follow nVent's instructions and warnings may cause product malfunction, property damage, serious bodily injury and death and/or void your warranty.

North America

+1.800.753.9221

Option 1 – Customer Care

Option 2 – Technical

Support

Europe

Netherlands:

+31 800-0200135

France:

+33 800 901 793

Europe

Germany:

800 1890272

Other Countries:

+31 13 5835404

APAC

Shanghai:

+ 86 21 2412 1618/19

Sydney:

+61 2 9751 8500



Our powerful portfolio of brands:

CADDY

ERICO

HOFFMAN

ILSCO

SCHROFF

TRACHTE