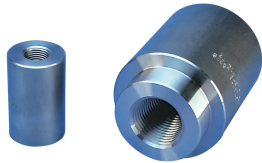


A2D6 Mechanical Anchor for Future Extension, Plain



FEATURES

Replaces conventional hooked reinforcing bar

Commonly used for future extensions in both beam/column and roof/column connections

Head area exceeds 5x bar area (net 4x)

SPECIFICATIONS

Finish: Plain

Material: Steel

100% U.S. Domestic Content: Yes

Table 1/2

Catalog Number	Rebar Size, Metric	Rebar Size, US	Rebar Size, Canada	Diameter 1 (Ø1)	Diameter 2 (Ø2)	Length 1 (L1)
EL12A2D6	12 mm	#4	10M	35 mm		41 mm
EL16A2D6	16 mm	#5	15M	38 mm		56 mm
EL20A2D6	20 mm	#6	20M	48 mm		71 mm
EL57TA2D6	57 mm	#18	55M	130 mm	76 mm	164 mm

CatalogNumber	Rebar Size, Metric	Rebar Size, US	Rebar Size, Canada	Diameter 1(Ø1)	Diameter 2(Ø2)	Length 1 (L1)
EL43TA2D6	43 mm	#14	45M	102 mm	64 mm	101 mm
EL22A2D6	22 mm	#7		51 mm		80 mm
EL25A2D6	25 mm	#8	25M	57 mm		85 mm
EL28A2D6	28 mm	#9	30M	70 mm		91 mm
EL32A2D6	32 mm	#10		76 mm		96 mm
EL36A2D6	36 mm	#11	35M	83 mm		100 mm

Table 2/2

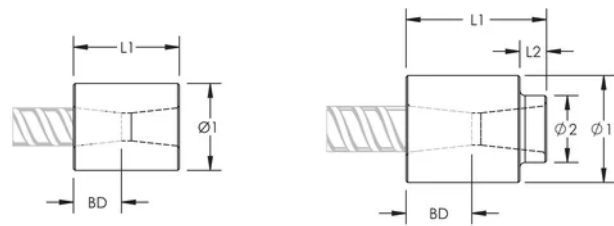
Catalog Number	Length 2 (L2)	Bar Depth (BD)	Unit Weight	Package Quantity
EL12A2D6		15mm	0.28 kg	80
EL16A2D6		22mm	0.43 kg	50
EL20A2D6		28mm	0.87 kg	25
EL57TA2D6	25 mm	71mm	12.81 kg	2
EL43TA2D6	25 mm	56mm	6.32 kg	2
EL22A2D6		32mm	1.1 kg	20
EL25A2D6		35mm	1.46 kg	15
EL28A2D6		38mm	2.39 kg	8
EL32A2D6		40mm	2.94 kg	6
EL36A2D6		43mm	3.6 kg	6

Designed to Meet: AASHTO;ABNT NBR 8548:1984;ACI 318 Type 1 (125% Specified Yield);ACI 318 Type 2 (Specified Tensile);ACI 349;ACI 359;AS3600

ADDITIONAL PRODUCT DETAILS

Bar dimensions and weights listed may vary by region. Coupler sizes not shown may be available by special order. Contact your nVent LENTON representative for more information.

DIAGRAMS



WARNING

nVent products shall be installed and used only as indicated in nVent's product instruction sheets and training materials. Instruction sheets are available at www.nvent.com and from your nVent customer service representative. Improper installation, misuse, misapplication or other failure to completely follow nVent's instructions and warnings may cause product malfunction, property damage, serious bodily injury and death and/or void your warranty.

North America

+1.800.753.9221
Option 1 – Customer Care
Option 2 – Technical
Support

Europe

Netherlands:
+31 800-0200135
France:
+33 800 901 793

Europe

Germany:
800 1890272
Other Countries:
+31 13 5835404

APAC

Shanghai:
+ 86 21 2412 1618/19
Sydney:
+61 2 9751 8500



Our powerful portfolio of brands:

CADDY ERICO HOFFMAN ILSCO SCHROFF TRACHTE