

Cone Air Terminal Base



FEATURES

For use on cone shaped metal surfaces

SPECIFICATIONS

Material: Copper

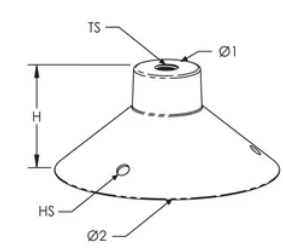
Table 1/1

Catalog Number	Thread Size (TS)	Diameter 1 (Ø1)	Diameter 2 (Ø2)	Height (H)	Hole Size (HS)	Unit Weight
LPC33912	1/2" UNC	29.46 mm	86.36 mm	40.64 mm	5.1 mm	0.27 kg
LPC33938	3/8" UNC	29.46 mm	86.36 mm	40.64 mm	5.1 mm	0.27 kg
LPC33958	5/8" UNC	29.46 mm	86.36 mm	40.64 mm	5.1 mm	0.27 kg

ADDITIONAL PRODUCT DETAILS

Base must be installed using three bolts or screws.

DIAGRAMS



WARNING

nVent products shall be installed and used only as indicated in nVent's product instruction sheets and training materials. Instruction sheets are available at www.nvent.com and from your nVent customer service representative. Improper installation, misuse, misapplication or other failure to completely follow nVent's instructions and warnings may cause product malfunction, property damage, serious bodily injury and death and/or void your warranty.

North America

+1.800.753.9221
Option 1 – Customer Care
Option 2 – Technical
Support

Europe

Netherlands:
+31 800-0200135
France:
+33 800 901 793

Europe

Germany:
800 1890272
Other Countries:
+31 13 5835404

APAC

Shanghai:
+ 86 21 2412 1618/19
Sydney:
+61 2 9751 8500



Our powerful portfolio of brands:

CADDY ERICO HOFFMAN ILSCO SCHROFF TRACHTE