

# 300M Universal Beam Clamp



## CERTIFICATIONS



## FEATURES

Universal beam clamp for standard beams

Structural attachment (with infinite adjustment) to top or bottom flange of metal beams to support hanger rod

Including set screw and lock nut

## SPECIFICATIONS

**Material:** Cast Iron

**Finish:** Electrogalvanized

Table 1/2

Catalog Number	Article Number	Hole Type	Hole Size (HS)	Thread Size (TS)	Flange Thickness (FT)	A
30009MM	389500	Plain	9 mm		18 mm Max	21 mm
30011MM	389510	Plain	11 mm		20 mm Max	23 mm
30013MM	389520	Plain	13 mm		26 mm Max	35 mm

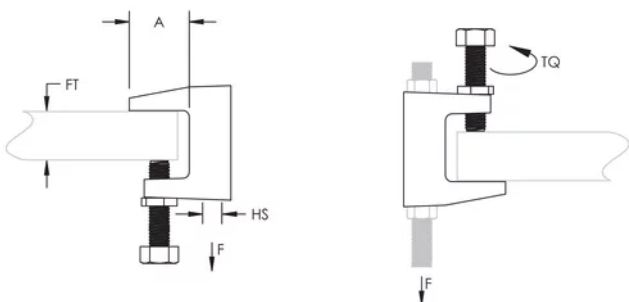
CatalogNumber	Article Number	Hole Type	Hole Size (HS)	Thread Size (TS)	Flange Thickness (FT)	A
30017MM	389505	Plain	17 mm		28 mm Max	30 mm
300M10	386820	Threaded		M10	20 mm Max	23 mm
300M12	386830	Threaded		M12	26 mm Max	35 mm

Table 2/2				
Catalog Number	Article Number	Torque (TQ)	Static Load	Certifications
30009MM	389500	14 N·m Min	1200N	ITB, VdS G4005005
30011MM	389510	14 N·m Min	2500N	FM Approved, Pipe Hanger Components, VdS G4005005, ITB
30013MM	389520	14 N·m Min	3500N	FM Approved, Pipe Hanger Components, ITB, VdS G4913044
30017MM	389505	14 N·m Min	5500N	ITB, VdS G4031026, FM Approved, Pipe Hanger Components
300M10	386820	14 N·m Min	2500N	VdS G4005005, FM Approved, Pipe Hanger Components, ITB
300M12	386830	14 N·m Min	3500N	FM Approved, Pipe Hanger Components, ITB, VdS G4913044

## ADDITIONAL PRODUCT DETAILS

Setscrew must be tightened and torqued onto the sloped side of the I-beam.

## DIAGRAMS



**WARNING**

nVent products shall be installed and used only as indicated in nVent's product instruction sheets and training materials. Instruction sheets are available at [www.nvent.com](http://www.nvent.com) and from your nVent customer service representative. Improper installation, misuse, misapplication or other failure to completely follow nVent's instructions and warnings may cause product malfunction, property damage, serious bodily injury and death and/or void your warranty.

**North America**

+1.800.753.9221  
Option 1 – Customer Care  
Option 2 – Technical  
Support

**Europe**

Netherlands:  
+31 800-0200135  
France:  
+33 800 901 793

**Europe**

Germany:  
800 1890272  
Other Countries:  
+31 13 5835404

**APAC**

Shanghai:  
+ 86 21 2412 1618/19  
Sydney:  
+61 2 9751 8500



Our powerful portfolio of brands:

**CADDY   ERICO   HOFFMAN   ILSCO   SCHROFF   TRACHTE**

