

T-Series Horizontal Splice Kit, Side Fill



T-Series splice kits contain the following: Sleeve, filler material kit (filler material, packing, pouring basin ceramic insert and disk, pouring basin ceramic guide tube), pouring basin and pouring basin crucible. Splice kits are ordered based on the quantity of splices needed. Sleeves and filler material kits are one-time use parts. Pouring basins and crucibles are prorated based on their anticipated life. Ordering splice kits simplifies ordering, reduces order errors and helps ensure proper sizing of components. Kits can be ordered with longer (extended) sleeves for use when the reinforcing steel deformation pattern or spacing does not meet the minimum product specifications.

FEATURES

Simplifies ordering

Used to splice the same diameter bars

SPECIFICATIONS

Sleeve: Standard Length

Table 1/2

Catalog Number	Rebar Size, Metric	Rebar Size, US	Rebar Size, Canada	Length 1 (L1)	Length 2 (L2)	Height 1 (H1)
RBT9101HS	28 mm	#9	30M	88 mm	407 mm	464mm
RBT1891HS	57 mm	#18	55M	102 mm	423 mm	533mm
RBT6101HS	20 mm	#6	20M	84 mm	397 mm	464mm
RBT11101HS	36 mm	#11	35M	94 mm	413 mm	502mm
RBT8101HS	25 mm	#8	25M	84 mm	403 mm	464mm
RBT1091HS	32 mm	#10		88 mm	407 mm	502mm

Table 2/2

Catalog Number	Height 2 (H2)	Diameter (Ø)	Package Quantity
RBT9101HS	75mm	102 mm	1
RBT1891HS	75mm	178 mm	1
RBT6101HS	75mm	102 mm	1
RBT11101HS	75mm	127 mm	1
RBT8101HS	75mm	102 mm	1
RBT1091HS	75mm	127 mm	1

ADDITIONAL PRODUCT DETAILS

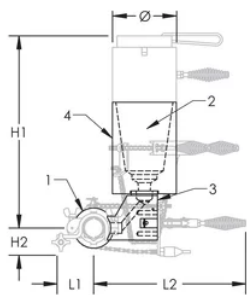
Prior to installation, please read and understand all of the detailed instructions and safety notices provided in the nVent LENTON Cadweld Rebar Splicing System instruction manual.

All dimensions are for reference only.

Components can also be purchased separately: (1) Sleeve, (2) Filler Material Kit (filler material, packing, pouring basin ceramic insert and disk, pouring basin ceramic guide tube), (3) Pouring Basin, and (4) Pouring Basin Crucible.

Splice Kit Components							
Splice Kit	Filler Material	Packing (2 Required)	Pouring Basin Ceramic Insert and Disk	Pouring Basin Ceramic Guide Tube	Sleeve	Pouring Basin	Pouring Basin Crucible
RBT6101HS	RBF50	RBS35477	RBS5037	RBS5038	RBT6101HSA	RBWS1547X	RBWS22774
RBT8101HS	RBF55	RBS354710	RBS5037	RBS5038	RBT8101HSA	RBWS1547C	RBWS22774
RBT9101HS	RBF80	RBS354711	RBS5037	RBS5038	RBT9101HSA	RBWS1547D	RBWS22774
RBT1091HS	RBF90	RBS354712	RBS5037	RBS5038	RBT1091HSA	RBWS1547E	RBWS22775
RBT11101HS	RBF105	RBS354712	RBS5037	RBS5038	RBT11101HSA	RBWS1547F	RBWS22775
RBT1891HS	RBF270	RBS354720	RBS5037	RBS5039	RBT1891HSA	RBWS1547M	RBWS22777

DIAGRAMS



WARNING

nVent products shall be installed and used only as indicated in nVent's product instruction sheets and training materials. Instruction sheets are available at www.nvent.com and from your nVent customer service representative. Improper installation, misuse, misapplication or other failure to completely follow nVent's instructions and warnings may cause product malfunction, property damage, serious bodily injury and death and/or void your warranty.

North America

+1.800.753.9221
Option 1 – Customer Care
Option 2 – Technical
Support

Europe

Netherlands:
+31 800-0200135
France:
+33 800 901 793

Europe

Germany:
800 1890272
Other Countries:
+31 13 5835404

APAC

Shanghai:
+ 86 21 2412 1618/19
Sydney:
+61 2 9751 8500



Our powerful portfolio of brands:

CADDY ERICO HOFFMAN ILSCO SCHROFF TRACHTE