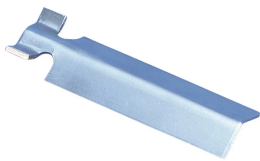


nVent LENTON Speed Sleeve Transition Adaptor, 86 mm x 38 mm

CATALOG NUMBER

RBW3999



nVent LENTON Speed Sleeve Transition Adaptors allow the nVent LENTON Speed Sleeve to be used as a transition splice. The transition adaptors are simply placed inside the sleeve underneath the straps of the smaller bar end.

FEATURES

- Bars can be individually secured
- Fast, one-man installation
- Requires only a lightweight ratchet wrench to install
- Can be used to splice two smaller bars

PRODUCT ATTRIBUTES

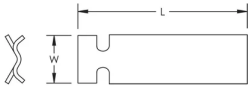
- Article Number: 145565
- Material: Steel
- Finish: Plain
- Length (L): 86mm
- Width (W): 38 mm
- Unit Weight: 0.04 kg

ADDITIONAL PRODUCT DETAILS

nVent LENTON Speed Sleeve is a compression-only splicing system. It should never be used for tension applications.

LENTON SPEED SLEEVE Transition Adaptors					
Rebar Size, Metric	Rebar Size, US	Rebar Size, Canada	Sleeve	Adaptor	Adaptors Required
25 to 22 mm	#8 to #7	-	RBW2688	RBW3997	1
28 to 25 mm	#9 to #8	-	RBW2689	RBW3998	1
32 to 28 mm	#10 to #9	-	RBW26810	RBW3999	1
36 to 32 mm	#11 to #10	35M to 30M	RBW26811	RBW39910	1
43 to 36 mm	#14 to #11	45M to 35M	RBW26814	RBW39911	2
57 to 43 mm	#18 to #14	55M to 45M	RBW26818	RBW39914	2

DIAGRAMS



WARNING

nVent products shall be installed and used only as indicated in nVent's product instruction sheets and training materials. Instruction sheets are available at www.nvent.com and from your nVent customer service representative. Improper installation, misuse, misapplication or other failure to completely follow nVent's instructions and warnings may cause product malfunction, property damage, serious bodily injury and death and/or void your warranty.

North America

+1.800.753.9221
Option 1 – Customer Care
Option 2 – Technical
Support

Europe

Netherlands:
+31 800-0200135
France:
+33 800 901 793

Europe

Germany:
800 1890272
Other Countries:
+31 13 5835404

APAC

Shanghai:
+ 86 21 2412 1618/19
Sydney:
+61 2 9751 8500



Our powerful portfolio of brands:

CADDY ERICO HOFFMAN ILSCO SCHROFF TRACHTE