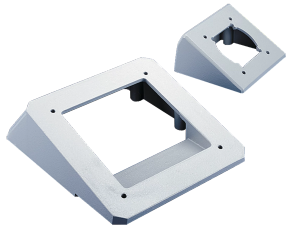


# Compact Series 4 Angle Adapter Plate



Compact Series 4 Angle Adapter Plate provides connection between enclosure and flange coupling, allowing the enclosure to tilt at a fixed angle of either 15- or 30-degree.

## FEATURES

---

Installation hardware and gasket included

Assembled Compact Series 4 HMI Arm System has a max weight load of 337 lb. (153.2 kg)

SPECIFICATIONS

Table 1/1						
Catalog Number	Article Number	Height	Width	Depth	Material	Finish
CCS568AA30LG	42069	67.564mm	127mm	148.082mm	Aluminum	Powder Coated

WARNING

nVent products shall be installed and used only as indicated in nVent's product instruction sheets and training materials. Instruction sheets are available at [www.nvent.com](http://www.nvent.com) and from your nVent customer service representative. Improper installation, misuse, misapplication or other failure to completely follow nVent's instructions and warnings may cause product malfunction, property damage, serious bodily injury and death and/or void your warranty.



Our powerful portfolio of brands:

CADDY   ERICO   HOFFMAN   ILSCO   SCHROFF   TRACHTE