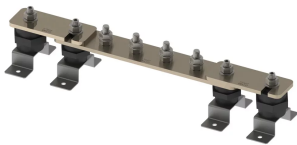


Electrical Earth Bar, Tinned, 16 Connections, 2 Number of Disconnects, 1,100 mm

Data Solutions

CATALOG NUMBER

EEB16T506D2A



FEATURES

Provides a convenient, single-point grounding and bonding location

Busbars with disconnect links allow for convenient testing of the earth termination system

High conductivity, hard drawn, electrolytic tough pitch copper per EN 13601

Includes halogen-free polyamide insulators, stainless steel (EN 1.4401) hardware and mounting brackets

Custom bars can be designed and manufactured to customer specifications

PRODUCT ATTRIBUTES

Complies With: IEC® EN 62561-1:2017 Class H

Material: Copper

Finish: Tinned

Number of Connections: 16

Number of Disconnects: 2

Thread Size (TS): M10

Height (H): 94mm

Length (L): 1100mm

Width 1 (W1): 100mm

Width 2 (W2): 50mm

Thickness (T): 6mm

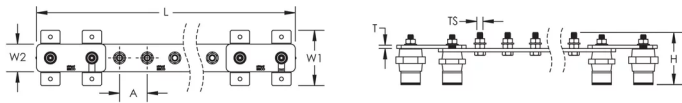
A: 50mm

Unit Weight: 5.43kg

ADDITIONAL PRODUCT DETAILS

Tinned finish is 8 microns according to ASTM B545 Service Class "C" for corrosive environments.

DIAGRAMS



WARNING

nVent products shall be installed and used only as indicated in nVent's product instruction sheets and training materials. Instruction sheets are available at www.nvent.com and from your nVent customer service representative. Improper installation, misuse, misapplication or other failure to completely follow nVent's instructions and warnings may cause product malfunction, property damage, serious bodily injury and death and/or void your warranty.



Our powerful portfolio of brands:

CADDY

ERICO

HOFFMAN

ILSCO

SCHROFF

TRACHTE