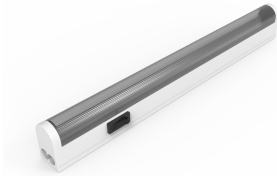


# Small Enclosure Light, TL



Energy efficient and cost effective LED enclosure light that can be installed in any enclosure. Helpful when maintenance has to be performed in the field.

## INDUSTRY STANDARDS

---

CE

EAC

## FEATURES

---

Delivery: 1 light with power cable 1.75 m long, one connection cable 140 mm long to connect lights to each other, plus mounting materials.

Light colour: 4000 K (neutral white).

Connections: Infeed, 2-pole. Through wiring, 2-pole.

Lamp type: LED.

Operating temperature: -5 °C +45 °C.

Operating voltage: 220 V - 240 V ~ 50 Hz.

Description: Energy saving and cost-effective lightning system to be fixed with the screws or adhesive tape provided. The power output allows lights to be connected to each other by using the serial cable included. Up to a maximum power of 100 W can be serial connected.

Approvals: CE, EAC.

Material: Body polycarbonate, end caps ABS, Protection cap PMMA.

## SPECIFICATIONS

---

**Material:** Polycarbonate; ABS  
**Color:** Light Gray  
**Finish:** Smooth

Table 1/1

Catalog Number	Height	Width	Depth	Voltage Rating	Frequency	Max Power Consumption
TL4001-9W	538mm	43mm	28mm	220 – 240V	50/60 HzHz	9W
TL4001-4W	277mm	43mm	28mm	220 – 240V	50/60 HzHz	4W

## WARNING

---

nVent products shall be installed and used only as indicated in nVent's product instruction sheets and training materials. Instruction sheets are available at [www.nvent.com](http://www.nvent.com) and from your nVent customer service representative. Improper installation, misuse, misapplication or other failure to completely follow nVent's instructions and warnings may cause product malfunction, property damage, serious bodily injury and death and/or void your warranty.



Our powerful portfolio of brands:

**CADDY ERICO HOFFMAN ILSCO SCHROFF TRACHTE**