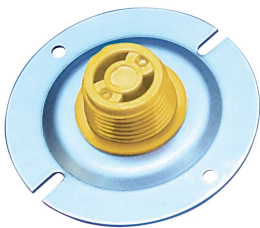


CFF Tapered Screw-In Plug for A12, A22 and A32K Couplers, 32 mm, #10

CATALOG NUMBER

EL32CFF



FEATURES

Designed for use with the A12, A22 and A32K coupler families

Designed to keep dirt, water and concrete slurry out of the coupler during the concrete pour

Durable mounting plates allow for easy attachment to forms

Color coded for the appropriate coupler size

PRODUCT ATTRIBUTES

Article Number: 153920

Material: High Density Polyethylene (HDPE);Steel

Rebar Size, Metric: 32 mm

Rebar Size, US: #10

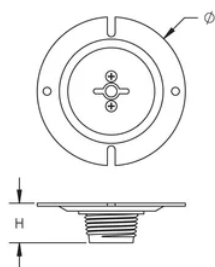
Diameter (Ø): 95 mm

Height (H): 18 mm

Color: Yellow

Package Quantity: 15

DIAGRAMS



WARNING

nVent products shall be installed and used only as indicated in nVent's product instruction sheets and training materials. Instruction sheets are available at www.nvent.com and from your nVent customer service representative. Improper installation, misuse, misapplication or other failure to completely follow nVent's instructions and warnings may cause product malfunction, property damage, serious bodily injury and death and/or void your warranty.

North America

+1.800.753.9221
Option 1 – Customer Care
Option 2 – Technical
Support

Europe

Netherlands:
+31 800-0200135
France:
+33 800 901 793

Europe

Germany:
800 1890272
Other Countries:
+31 13 5835404

APAC

Shanghai:
+ 86 21 2412 1618/19
Sydney:
+61 2 9751 8500



Our powerful portfolio of brands:

CADDY ERICO HOFFMAN ILSCO SCHROFF TRACHTE