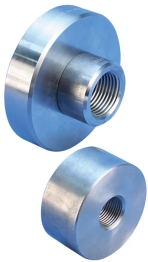


# D14 Mechanical Anchor, Plain, Worldwide Design



## CERTIFICATIONS



## FEATURES

Replaces conventional hooked reinforcing bar

Simplifies reinforcing bar placement and lowers placing costs

Head area exceeds 10x bar area (net 9x)

## SPECIFICATIONS

- Finish:** Plain
- Material:** Steel
- Design Version:** Worldwide (Globally Available Materials)

Table 1/2

Catalog Number	Rebar Size, Metric	Rebar Size, US	Rebar Size, Canada	Diameter 1 (Ø1)	Diameter 2 (Ø2)	Length 1 (L1)

EL10D14N	10 mm	#3		35 mm		18 mm
EL12D14N	12 mm	#4	10M	45 mm		18 mm
EL14D14N	14 mm			45 mm		21 mm
EL16D14N	16 mm	#5	15M	55 mm		24 mm
EL18D14N	18 mm			60 mm		29 mm
EL32D14WN	32 mm	#10		80 mm	105 mm	45 mm
EL20D14N	20 mm	#6	20M	65 mm		35 mm
EL28D14N	28 mm	#9	30M	95 mm	80 mm	42 mm
EL30D14N	30 mm			95 mm	80 mm	52 mm
EL34D14N	34 mm			110 mm	80 mm	55 mm
EL36D14N	36 mm	#11	35M	115 mm	80 mm	52 mm
EL38D14N	38 mm	#12		120 mm	80 mm	53 mm
EL22D14N	22 mm	#7		70 mm		37 mm
EL40D14WN	40 mm			80 mm	130 mm	57 mm
EL25D14N	25 mm	#8	25M	80 mm		40 mm
EL50TD14WN	50 mm			80 mm	160 mm	70 mm

Table 2/2

Catalog Number	Length 2 (L2)	Unit Weight	Certifications
EL10D14N		0.12 kg	DIBt, AFCAB, TZUS, nVent LENTON EPD - Product Specific, ITB

Catalog Number	Length 2 (L2)	Unit Weight	Certifications
EL12D14N		0.21 kg	DIBt, AFCAB, RISE, CARES, TZUS, nVent LENTON EPD - Product Specific, ITB
EL14D14N		0.24 kg	DIBt, AFCAB, RISE, CARES, TZUS, nVent LENTON EPD - Product Specific, ITB
EL16D14N		0.41 kg	DIBt, AFCAB, RISE, CARES, TZUS, nVent LENTON EPD - Product Specific, ITB
EL18D14N		0.6 kg	TZUS, nVent LENTON EPD - Product Specific, ITB
EL32D14WN	20 mm	2.11 kg	CARES, nVent LENTON EPD - Product Specific
EL20D14N		0.83 kg	ITB, DIBt, AFCAB, RISE, CARES, TZUS, nVent LENTON EPD - Product Specific
EL28D14N	25 mm	1.93 kg	TZUS, nVent LENTON EPD - Product Specific, ITB, DIBt
EL30D14N	25 mm	2.48 kg	nVent LENTON EPD - Product Specific
EL34D14N	25 mm	3.23 kg	nVent LENTON EPD - Product Specific
EL36D14N	25 mm	3.16 kg	TZUS, nVent LENTON EPD - Product Specific
EL38D14N	25 mm	3.49 kg	nVent LENTON EPD - Product Specific
EL22D14N		1.03 kg	TZUS, nVent LENTON EPD - Product Specific, ITB
EL40D14WN	32 mm	3.82 kg	CARES, nVent LENTON EPD - Product Specific
EL25D14N		1.43 kg	ITB, DIBt, AFCAB, RISE, CARES, TZUS, nVent LENTON EPD - Product Specific
EL50TD14WN	45 mm	7.07 kg	CARES, nVent LENTON EPD - Product Specific

**Designed to Meet:** ACI 318;AS3600;ASTM A970

## ADDITIONAL PRODUCT DETAILS

---

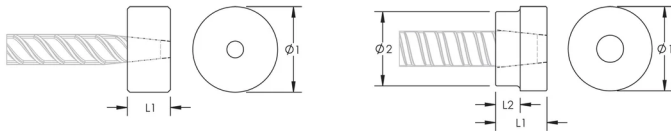
Bar dimensions and weights listed may vary by region. Coupler sizes not shown may be available by special order. Contact your nVent LENTON representative for more information.

Thread does not need to be flush with end of nVent LENTON Terminator. Thread may be +/- 2 threads from backside of coupler.

For EL32D14WN, EL40D14WN and EL50TD14WN, Diameter 2 ( $\varnothing 2$ ) is larger than Diameter 1 ( $\varnothing 1$ ).

## DIAGRAMS

---



## WARNING

---

nVent products shall be installed and used only as indicated in nVent's product instruction sheets and training materials. Instruction sheets are available at [www.nvent.com](http://www.nvent.com) and from your nVent customer service representative. Improper installation, misuse, misapplication or other failure to completely follow nVent's instructions and warnings may cause product malfunction, property damage, serious bodily injury and death and/or void your warranty.

### North America

+1.800.753.9221  
Option 1 – Customer Care  
Option 2 – Technical  
Support

### Europe

Netherlands:  
+31 800-0200135  
France:  
+33 800 901 793

### Europe

Germany:  
800 1890272  
Other Countries:  
+31 13 5835404

### APAC

Shanghai:  
+ 86 21 2412 1618/19  
Sydney:  
+61 2 9751 8500



Our powerful portfolio of brands:

**CADDY ERICO HOFFMAN ILSCO SCHROFF TRACHTE**