

# Eight Hole Double Corner Connector, 3-Way



## FEATURES

Used to create metal frames with nVent CADDY Eristrut channels

## SPECIFICATIONS

**Finish:** Hot-Dip Galvanized

**Material:** Steel

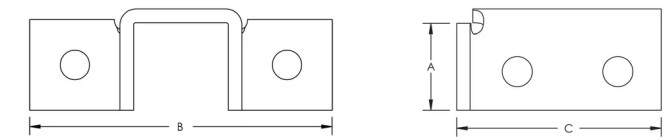
Table 1/2

Catalog Number	Article Number	A	B	C	Hole Size (HS)	Thickness (T)
ZZ702	313850	43 mm	140 mm	102 mm	14 mm	6 mm
ZZA702	387720	43 mm	140 mm	102 mm	14 mm	6 mm

Table 2/2

Catalog Number	Article Number	Screw Included	Screw Diameter (Sc)	Screw Length (L)
ZZ702	313850	Yes	10	25mm
ZZA702	387720	No		

DIAGRAMS



WARNING

nVent products shall be installed and used only as indicated in nVent's product instruction sheets and training materials. Instruction sheets are available at [www.nvent.com](http://www.nvent.com) and from your nVent customer service representative. Improper installation, misuse, misapplication or other failure to completely follow nVent's instructions and warnings may cause product malfunction, property damage, serious bodily injury and death and/or void your warranty.

North America

+1.800.753.9221  
Option 1 – Customer Care  
Option 2 – Technical  
Support

Europe

Netherlands:  
+31 800-0200135  
France:  
+33 800 901 793

Europe

Germany:  
800 1890272  
Other Countries:  
+31 13 5835404

APAC

Shanghai:  
+ 86 21 2412 1618/19  
Sydney:  
+61 2 9751 8500



Our powerful portfolio of brands:

CADDY   ERICO   HOFFMAN   ILSCO   SCHROFF   TRACHTE

