

Bar Joist Attachment



CERTIFICATIONS



FEATURES

Can be installed on bar joists or I-beams

Thumb spring retainer allows for ease of positioning

Snap-off bolt head helps enable easy installation and inspection of seismic sway braces

No assembly required

No loose parts

Meets NFPA®-13 requirements for seismic sway bracing

Meets CEN/TS 17551:2021 requirements for Seismic Sway Bracing

SPECIFICATIONS

Table 1/2

Catalog Number	Article Number	Material	Finish	Flange Thickness (FT)	Screw Diameter (Sc)	A
CSBBARJEG	404354	Cast Iron	Electrogalvanized	6.4 - 12.7 mm	0.5	50.8 mm

Table 2/2

Catalog Number	Article Number	B	C
----------------	----------------	---	---

CSBBARJEG	404354	76.2 mm	63.5 mm
-----------	--------	---------	---------

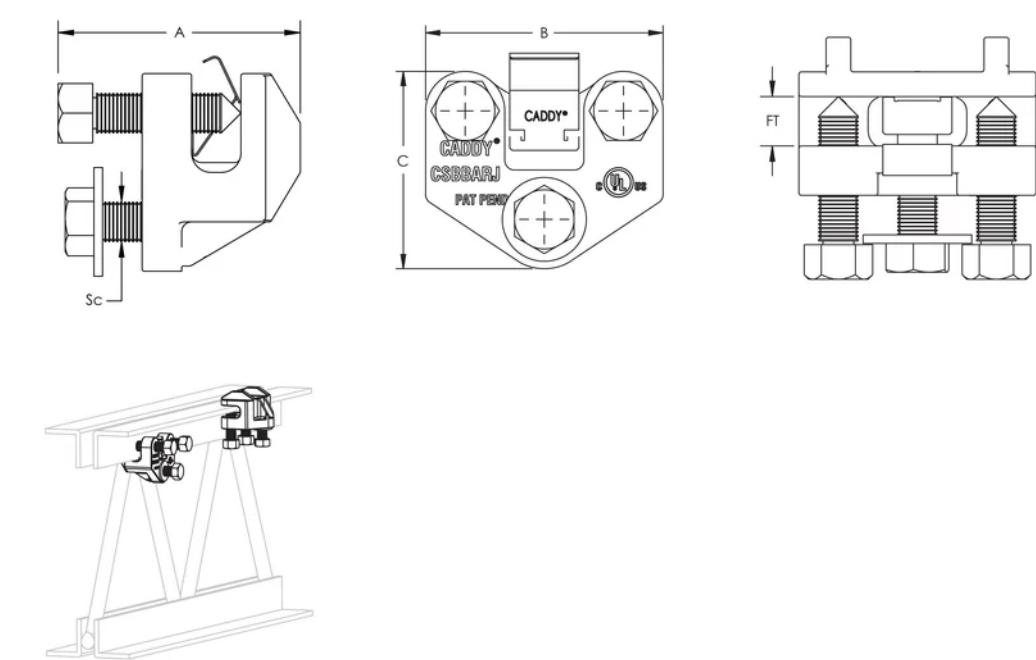
ADDITIONAL PRODUCT DETAILS

Structure Attachment and Brace Member are not included.

UL Loads				
Part Number	Structure Attachment Fitting	Flange Thickness	Brace Member	Load Rating
CSBBARJ	CSBUNIV050	6 - 13 mm	DN25 - DN50 Sch. 40 NPS	4004 N
	CSBURC12	6 - 13 mm	CSB12CBL	1859 N
			CSB18CBL	3434 N
			CSB36CBL	4893 N

FM Loads					
Brace Direction	Service Pipe Size	Horizontal Capacity per Intallation Angle from Vertical			
		30°- 44°	45°- 59°	60°- 74°	75°- 90°
Parallel	N/A	6270 N	9385 N	11300 N	12590 N
Perpendicular	N/A	7740 N	7605 N	9165 N	10230 N

DIAGRAMS



WARNING

nVent products shall be installed and used only as indicated in nVent's product instruction sheets and training materials. Instruction sheets are available at www.nvent.com and from your nVent customer service representative. Improper

installation, misuse, misapplication or other failure to completely follow nVent's instructions and warnings may cause product malfunction, property damage, serious bodily injury and death and/or void your warranty.

North America

+1.800.753.9221
Option 1 – Customer Care
Option 2 – Technical
Support

Europe

Netherlands:
+31 800-0200135
France:
+33 800 901 793

Europe

Germany:
800 1890272
Other Countries:
+31 13 5835404

APAC

Shanghai:
+ 86 21 2412 1618/19
Sydney:
+61 2 9751 8500



Our powerful portfolio of brands:

CADDY ERICO HOFFMAN ILSCO SCHROFF TRACHTE

