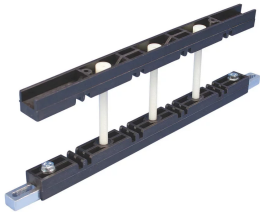


# Compact Busbar Support with Neutral Circuit



## CERTIFICATIONS



## FEATURES

Compact design fits in 400 mm (15 3/4") deep panels

Includes mounting holes for direct fixing of protection screen

Installs quickly and easily

Halogen free

RoHS compliant

## SPECIFICATIONS

|  |   |
|--|---|
| <b>Busbar Width:</b>                       | 25 - 80 mm  |
| <b>Typical Application Current Rating:</b> | 250 - 1600 A  |
| <b>Max Working Voltage, IEC (Ui):</b>      | 1000;1500   |
| <b>Material:</b>                           | Aluminum;Glass Fibre Reinforced Polyamide                         |
| <b>Complies With:</b>                      | IEC® 60439.1;IEC® 61439.1;IEC® 60695-2-11 (Glow Wire Test 960 °C) |
| <b>Flammability Rating:</b>                | UL® 94V-0   |
| <b>Working Temperature:</b>                | -40 to 130 °C   |

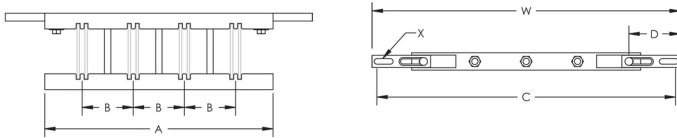
Table 1/2

| Catalog Number | Article Number | Busbars per Phase | Busbar Thickness | Width (W)    | A      | B     |
|----------------|----------------|-------------------|------------------|--------------|--------|-------|
| CBS-B2-5TN     | 551151         | 1 - 2             | 5 mm             | 338 - 390 mm | 290 mm | 65 mm |
| CBS-B1-10TN    | 551181         | 1                 | 10 mm            | 338 - 390 mm | 290 mm | 60 mm |

Table 2/2

| Catalog Number | Article Number | C            | D     | X           |
|----------------|----------------|--------------|-------|-------------|
| CBS-B2-5TN     | 551151         | 325 - 377 mm | 65 mm | 6.5 x 23 mm |
| CBS-B1-10TN    | 551181         | 325 - 377 mm | 65 mm | 6.5 x 23 mm |

## DIAGRAMS



## WARNING

nVent products shall be installed and used only as indicated in nVent's product instruction sheets and training materials. Instruction sheets are available at [www.nvent.com](http://www.nvent.com) and from your nVent customer service representative. Improper installation, misuse, misapplication or other failure to completely follow nVent's instructions and warnings may cause product malfunction, property damage, serious bodily injury and death and/or void your warranty.

### North America

+1.800.753.9221  
 Option 1 – Customer Care  
 Option 2 – Technical  
 Support

### Europe

Netherlands:  
 +31 800-0200135  
 France:  
 +33 800 901 793

### Europe

Germany:  
 800 1890272  
 Other Countries:  
 +31 13 5835404

### APAC

Shanghai:  
 + 86 21 2412 1618/19  
 Sydney:  
 +61 2 9751 8500



Our powerful portfolio of brands:

**CADDY ERICO HOFFMAN ILSCO SCHROFF TRACHTE**