

Plug Bond Track Connector, Signal



FEATURES

Utilized for attachment of bondstrand or solid copper track wires for track connections, fouling circuits, or bonding around the joint splice bar

Hammered into a 3/8" (9.5 mm) diameter hole drilled through the rail web and driven from the same side the hole was drilled

SPECIFICATIONS

Table 1/2

Catalog Number	Material	Finish	Conductor Size	Connector Conductor Size	Length (L)	Diameter 1 (Ø1)
SBPAC3A	Copper Alloy, Cadmium Bronze, Carbon Steel	Electrogalvanized, Tinned, Bare	3/16" Bondstrand	3/16" Bondstrand	120.7mm	4.8 mm

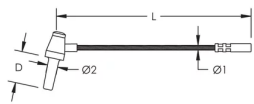
Table 2/2

Catalog Number	Diameter 2 (Ø2)	Depth (D)
SBPAC3A	10.5 mm	31.75mm

ADDITIONAL PRODUCT DETAILS

Plug Bond Grease (T369) recommended when installing.

DIAGRAMS



WARNING

nVent products shall be installed and used only as indicated in nVent's product instruction sheets and training materials. Instruction sheets are available at www.nvent.com and from your nVent customer service representative. Improper installation, misuse, misapplication or other failure to completely follow nVent's instructions and warnings may cause product malfunction, property damage, serious bodily injury and death and/or void your warranty.

⚠ WARNING: This product can expose you to chemicals including cadmium, which is known to the State of California to cause birth defects or other reproductive harm. For more information go to www.P65Warnings.ca.gov.

North America

+1.800.753.9221
Option 1 – Customer Care
Option 2 – Technical
Support

Europe

Netherlands:
+31 800-0200135
France:
+33 800 901 793

Europe

Germany:
800 1890272
Other Countries:
+31 13 5835404

APAC

Shanghai:
+ 86 21 2412 1618/19
Sydney:
+61 2 9751 8500



Our powerful portfolio of brands:

CADDY ERICO HOFFMAN ILSCO SCHROFF TRACHTE