

SOSR Stand Off Two Hole Strap for CPVC Pipe



CERTIFICATIONS



FEATURES

Includes flared edges to protect piping

Rated for use with CPVC fire sprinkler pipe

Positions pipe 1-1/2" (38 mm) off the mounting surface eliminating the need for wooden spacer blocks

Can be mounted in both vertical and horizontal positions on concrete, steel and wood

Meets the UL® 203 stringent upward thrust requirement

UL® Listed as both a hanger and pipe restraint

Complies with static load requirements of NFPA® 13

Includes mounting screws

Can be used with 3TW backing nut on composite wood joist installations

SPECIFICATIONS

Finish: Pregalvanized

Material: Steel

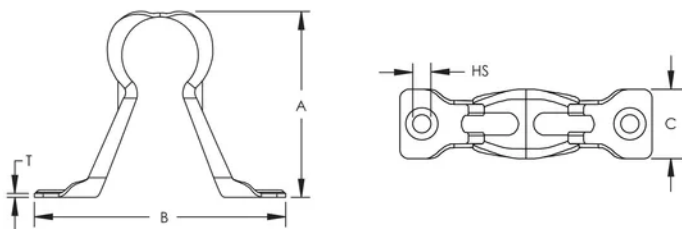
Table 1/2

Catalog Number	Article Number	NB/DN	Hole Size (HS)	A	B	C
SOSR200	597809	50	5.1 mm	102 mm	133 mm	25.4 mm
SOSR150	597808	40	5.1 mm	98 mm	114 mm	25.4 mm
SOSR100	597806	25	5.1 mm	75 mm	94 mm	25.4 mm
SOSR125	597807	32	5.1 mm	84 mm	92 mm	25.4 mm
SOSR075	597805	20	5.1 mm	68 mm	92 mm	25.4 mm

Table 2/2

Catalog Number	Article Number	Thickness (T)	Hanger Spacing
SOSR200	597809	1.61 mm	2.4 m Max
SOSR150	597808	1.61 mm	2.1 m Max
SOSR100	597806	1.3 mm	1.8 m Max
SOSR125	597807	1.61 mm	1.95 m Max
SOSR075	597805	1.3 mm	1.65 m Max

DIAGRAMS



WARNING

nVent products shall be installed and used only as indicated in nVent's product instruction sheets and training materials. Instruction sheets are available at www.nvent.com and from your nVent customer service representative. Improper installation, misuse, misapplication or other failure to completely follow nVent's instructions and warnings may cause

product malfunction, property damage, serious bodily injury and death and/or void your warranty.

North America

+1.800.753.9221

Option 1 – Customer Care

Option 2 – Technical

Support

Europe

Netherlands:

+31 800-0200135

France:

+33 800 901 793

Europe

Germany:

800 1890272

Other Countries:

+31 13 5835404

APAC

Shanghai:

+ 86 21 2412 1618/19

Sydney:

+61 2 9751 8500



Our powerful portfolio of brands:

CADDY ERICO HOFFMAN ILSCO SCHROFF TRACHTE

