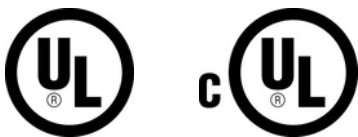


# nVent CADDY Speed Link SLS with Decking Hook



## CERTIFICATIONS



## FEATURES

Complete system includes wire, locking device and pre-assembled decking hook end fitting

Quickly and easily attaches to hollow metal decking

Spring-loaded ends snap into decking hole and lock into place

Innovative design helps protect the wire from sharp edges of decking hole, minimizing risk of damage to wire

Finger tightening of nut secures the locking device into position without tools

Installs in strut profiles without the need to insert fingers or tools into the strut

## SPECIFICATIONS

Table 1/2

Catalog Number	Article Number	Material	Finish	Static Load Safety Factor	Complies With	Wire Rope Diameter
SLS2L3DH	196753	Steel, Zinc Alloy, Polypropylene	Electrogalvanized	5:1	SMACNA HVAC-DCS	2 mm

Table 2/2

Catalog Number	Article Number	Wire Rope Length	Roof Decking Sheet Thickness	A	Hole Size 1 (HS1)	Static Load
SLS2L3DH	196753	3m	1.5 mm Max	9.2 mm	8 mm	270N

**Hole Size 2 (HS2):** 8 - 10 mm

**Slot Size (SS):** 8 x 6.5 mm - 8 x 10 mm

**Width (W):** 16 mm

**Height 2 (H2):** 46.5mm

**Height 1 (H1):** 53mm

**Thickness (T):** 4 mm Max

**Thread Size (TS):** M8

## ADDITIONAL PRODUCT DETAILS

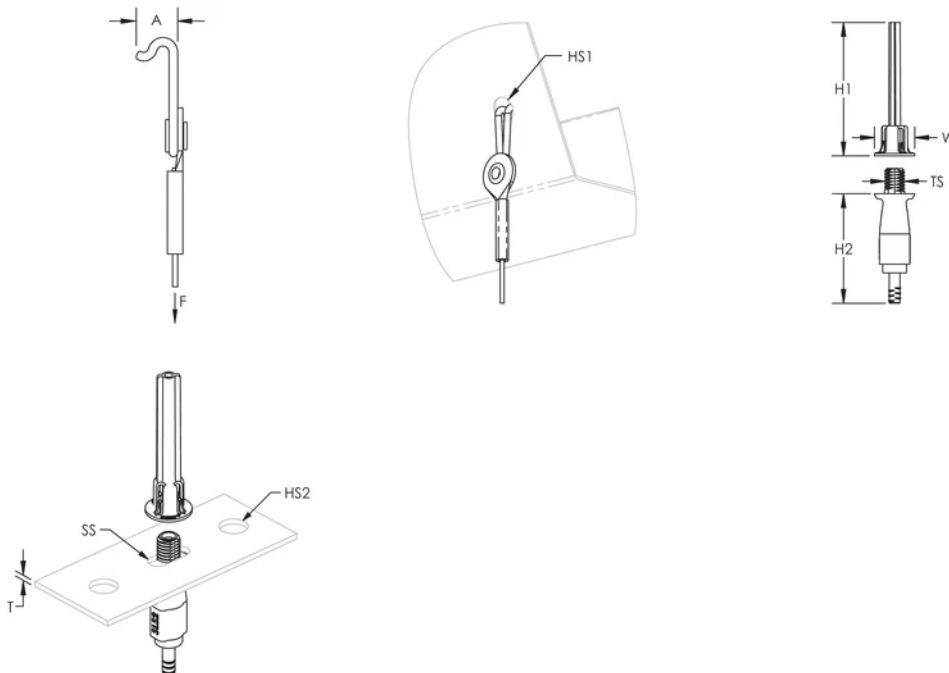
The 2 mm locking device is compatible with C-Channel Types E0 and E0L.

Total load per wire on a multi-tier trapeze must not exceed static load.

Load rating is only applicable if the load-bearing capacity of the supporting element (steel decking) is adequate.

Check with deck manufacturer for recommended load capacity.

## DIAGRAMS



**WARNING**

nVent products shall be installed and used only as indicated in nVent's product instruction sheets and training materials. Instruction sheets are available at [www.nvent.com](http://www.nvent.com) and from your nVent customer service representative. Improper installation, misuse, misapplication or other failure to completely follow nVent's instructions and warnings may cause product malfunction, property damage, serious bodily injury and death and/or void your warranty.

**North America**

+1.800.753.9221  
Option 1 – Customer Care  
Option 2 – Technical  
Support

**Europe**

Netherlands:  
+31 800-0200135  
France:  
+33 800 901 793

**Europe**

Germany:  
800 1890272  
Other Countries:  
+31 13 5835404

**APAC**

Shanghai:  
+ 86 21 2412 1618/19  
Sydney:  
+61 2 9751 8500



Our powerful portfolio of brands:

**CADDY   ERICO   HOFFMAN   ILSCO   SCHROFF   TRACHTE**

