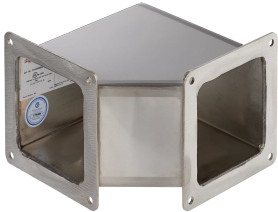


Elbow 90-Degree Feed-Through Stainless Steel



Feed-Through Stainless Steel 90-Degree Elbows are for continuous runs with 90-degree turns. Connects to other wireway sections and fittings and protects wires and cables in frequently hosed down, very wet or highly corrosive applications.

FEATURES

Feed-Through Stainless Steel 90-Degree Elbows are for continuous runs with 90-degree turns

Connects to other wireway sections and fittings and protects wires and cables in frequently hosed down, very wet or highly corrosive applications

SPECIFICATIONS

Finish: No. 2B
Material: Stainless Steel 304

Table 1/1

| Catalog Number | Type | Height | Width | Thickness | Quick Ship |
|----------------|-------|--------|-------|-----------|------------|
| F66WE90SS | Elbow | 152mm | 152mm | 1.59mm | No |
| F44WE90SS | Elbow | 102mm | 102mm | 1.59mm | No |

ADDITIONAL PRODUCT DETAILS

All dimensions are to outside surfaces. Allow .12 in. (3 mm) additional for gasket at joints. Dimension J is from intersection of center lines.

WARNING

nVent products shall be installed and used only as indicated in nVent's product instruction sheets and training materials. Instruction sheets are available at www.nvent.com and from your nVent customer service representative. Improper installation, misuse, misapplication or other failure to completely follow nVent's instructions and warnings may cause product malfunction, property damage, serious bodily injury and death and/or void your warranty.



Our powerful portfolio of brands:

CADDY ERICO HOFFMAN ILSCO SCHROFF TRACHTE