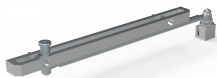


Door Stopper Kit for Varistar CP

CATALOG NUMBER

24630-164



Designed for use with Varistar CP enclosures to secure the door in 90° or 120° standard open positions. It can be used in rugged environments and applications like Seismic and MIL. This door stop kit is ideal for use in applications that require the kind of corrosion protection as the components are Aluminum and steel with Zinc plating.

FEATURES

Designed to be mounted at the bottom of door

Can be installed on either left- or right-hinged doors

The user manual will give standard positions for 90° and 120° angles

Anchor point is in front of the 19 inch uprights and hence there is no loss of rack unit at bottom

Does not work with glass doors

PRODUCT ATTRIBUTES

Product Type: Assembly Kit

Works With: Varistar CP

Material: Aluminum; Steel

Finish: Zinc Plated

Package Quantity: 1

WARNING

nVent products shall be installed and used only as indicated in nVent's product instruction sheets and training materials. Instruction sheets are available at www.nvent.com and from your nVent customer service representative. Improper installation, misuse, misapplication or other failure to completely follow nVent's instructions and warnings may cause product malfunction, property damage, serious bodily injury and death and/or void your warranty.

North America

All locations

+1.763.422.2661

Chat with us:

nvent.com/schroff

Europe

Straubenhardt, Germany

+49.7082.794.0

Betschdorf, France

+33.3.88.90.64.90

Warsaw, Poland

+48.22.209.98.35

Assago, Italy

+39.02.932.7141

Chat with us:

nvent.com/schroff

Asia

Shanghai, China

+86.21.2412.6943

Qingdao, China

+86.532.8771.6101

Singapore

+65.6768.5800

Shin-Yokohama, Japan

+81.45.476.0271

Chat with us:

nvent.com/schroff

Middle East & India

Dubai, United Arab

Emirates

+971.4.378.1700

Bangalore, India

+91.80.6715.2001

Istanbul, Turkey

+90.216.250.7374

Chat with us:

nvent.com/schroff



Our powerful portfolio of brands:

CADDY

ERICO

HOFFMAN

ILSCO

SCHROFF

TRACHTE