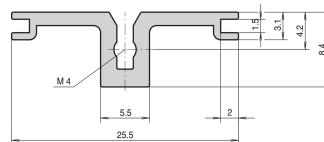


# Horizontal Rail Rear, Type AB for Rear I/O Board Guides, 40 HP

## Power Utilities

### CATALOG NUMBER

**34561-540**



Combinations of horizontal rails and side panels

	Light r.f.	Flourescent r.f.	Heavy r.f.	Rugged r.f.
Support r.f.	-	+	+	+
Panel r.f.	+	+	+	+
Horizontal rail	+	+	-	-
Side panel	+	+	-	-

Legend: + = can be combined, - = combination not recommended

Aluminum extrusion horizontal rail of the type AB (AB = support), for rear I/O card guides, with an anodized surface and conductive contact surface. Suitable for RatiopacPRO/-AIR and EuropacPRO/-rugged).

### CERTIFICATIONS



### FEATURES

For CompactPCI in the area of rear I/O

For 2 x 3 U expansion, 2 horizontal rails of type AB are required

Aluminum extrusion, anodized surface, conductive contact surface, without HP markings

### PRODUCT ATTRIBUTES

Product Type: Horizontal Rail

Product Family: EuropacPRO; RatiopacPRO; RatiopacPRO AIR; CompacPRO; PropacPRO

Type: Type AB

Rack Width: 40 HP

Length: 208.28 mm

Package Quantity: 1

## ADDITIONAL PRODUCT DETAILS

---

Delivery is in standard pack multiples. Pricing is per individual item.

Please take into consideration that deliveries may be carried out in the stated SPQs (SPQ, e.g. 5 pieces, 10 pieces, 50 pieces, etc.). Differing order quantities (e.g. 2 pieces) may be changed to the next possible delivery quantity = Standard Pack Quantity.

## WARNING

---

nVent products shall be installed and used only as indicated in nVent's product instruction sheets and training materials. Instruction sheets are available at [www.nvent.com](http://www.nvent.com) and from your nVent customer service representative. Improper installation, misuse, misapplication or other failure to completely follow nVent's instructions and warnings may cause product malfunction, property damage, serious bodily injury and death and/or void your warranty.



Our powerful portfolio of brands:

**CADDY**

**ERICO**

**HOFFMAN**

**ILSCO**

**SCHROFF**

**TRACHTE**