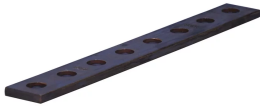


Grounding Busbar for Inspection Housing



FEATURES

Grounding busbar for use in conjunction with ground rod inspection housings

SPECIFICATIONS

Material: Copper

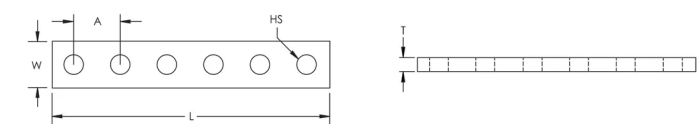
Table 1/2

Catalog Number	Article Number	Length (L)	Width (W)	Thickness (T)	A	Hole Size (HS)
BEP25X5X150	545530	150mm	25 mm	5 mm	25 mm	10.5 mm
BEP25X5X300	545140	300mm	25 mm	5 mm	25 mm	10.5 mm
BEP25X5X200	545135	200mm	25 mm	5 mm	25 mm	10.5 mm

Table 2/2

Catalog Number	Article Number	Hole Quantity	Inspection Housing	Unit Weight
BEP25X5X150	545530	6	PIT193X122, PITR180	0.17 kg
BEP25X5X300	545140	12	IP-900-C	0.33 kg
BEP25X5X200	545135	8	PIT03	0.22 kg

DIAGRAMS



WARNING

nVent products shall be installed and used only as indicated in nVent's product instruction sheets and training materials. Instruction sheets are available at www.nvent.com and from your nVent customer service representative. Improper installation, misuse, misapplication or other failure to completely follow nVent's instructions and warnings may cause product malfunction, property damage, serious bodily injury and death and/or void your warranty.

North America

+1.800.753.9221
Option 1 – Customer Care
Option 2 – Technical
Support

Europe

Netherlands:
+31 800-0200135
France:
+33 800 901 793

Europe

Germany:
800 1890272
Other Countries:
+31 13 5835404

APAC

Shanghai:
+ 86 21 2412 1618/19
Sydney:
+61 2 9751 8500



Our powerful portfolio of brands:

CADDY ERICO HOFFMAN ILSCO SCHROFF TRACHTE