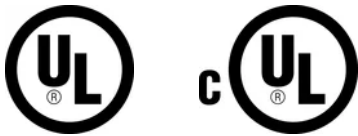


nVent CADDY Speed Link SLK with Shot-Fire Bracket



CERTIFICATIONS



FEATURES

Complete system includes wire, locking device and shot-fire bracket with pre-assembled drive pin from Powers Fasteners, Inc.

Quickly and easily attaches to concrete, steel or composite metal decking

Integrated pin installs easily using powder-actuated or single-shot gas-actuated tools

ICC-ES ESR-2024 evaluation report available for drive pin from DEWALT®

SPECIFICATIONS

Static Load Safety Factor:	5:1
Finish:	Electrogalvanized
Material:	Steel;Zinc Alloy;Polypropylene
Complies With:	SMACNA HVAC-DCS

Table 1/2

Catalog Number	Article Number	Wire Rope Diameter	Wire Rope Length	A	B	C
----------------	----------------	--------------------	------------------	---	---	---

SLK15L1SF	196517	1.5 mm	1m	37.5 mm	7.6 mm	31.8 mm
SLK15L2SF	196518	1.5 mm	2m	37.5 mm	7.6 mm	31.8 mm
SLK15L3SF	196519	1.5 mm	3m	37.5 mm	7.6 mm	31.8 mm
SLK15L5SF	196520	1.5 mm	5m	37.5 mm	7.6 mm	31.8 mm
SLK2L2SF	196546	2 mm	2m	37.5 mm	7.6 mm	31.8 mm

Table 2/2

Catalog Number	Article Number	Static Load
SLK15L1SF	196517	195N
SLK15L2SF	196518	195N
SLK15L3SF	196519	195N
SLK15L5SF	196520	195N
SLK2L2SF	196546	440N

Thickness (T): 12.5 mm

Width (W): 19 mm

Height (H): 55 mm

Angle (a): 90 ° Max

ADDITIONAL PRODUCT DETAILS

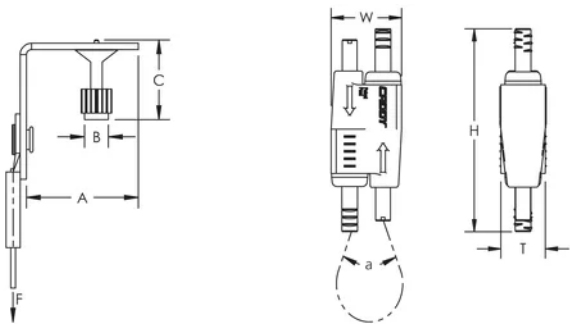
Uses Powers Fasteners, Inc. part number 50032.

Static load was established based on a 1" (25.4 mm) embedment depth and 3,000 psi (20.68 MPa) lightweight concrete. For variations in embedment and material please consult anchors.dewalt.com.

Pre-assembled drive pin from Powers Fasteners, Inc. works with Powers® C4CZ, Simpson® GCN-MEPKT, SPIT® P1000, P200, P2201, P3500 / PA3500, P35s, P45, P60, P7201, Sniper; Ramset® 721, Cobra, D45 / D60 / D60L, M70, SA270, T3SS, TS750P, TS60P, Viper; Hilti® DX35, DX350 / DX351 / DX36M, DX100 / DX200, DX460, DXA40, DXA41, DXE72 / DX400; Würth® Diva-1, BST-1, BST-2 or equivalent nailers.

For shot-fired supports in seismic design category D, E, or F, maximum load is the lesser of 90 lb (400 N) or the published load.

DIAGRAMS



WARNING

nVent products shall be installed and used only as indicated in nVent's product instruction sheets and training materials. Instruction sheets are available at www.nvent.com and from your nVent customer service representative. Improper installation, misuse, misapplication or other failure to completely follow nVent's instructions and warnings may cause product malfunction, property damage, serious bodily injury and death and/or void your warranty.

North America

+1.800.753.9221
Option 1 – Customer Care
Option 2 – Technical
Support

Europe

Netherlands:
+31 800-0200135
France:
+33 800 901 793

Europe

Germany:
800 1890272
Other Countries:
+31 13 5835404

APAC

Shanghai:
+ 86 21 2412 1618/19
Sydney:
+61 2 9751 8500



Our powerful portfolio of brands:

CADDY ERICO HOFFMAN ILSCO SCHROFF TRACHTE

