

Packing Cap



Packing caps are used when splicing to short dowels and there is not enough room for standard installation equipment. Packing caps help retain and position packing materials, which helps minimize leakage of the molten filler materials during installation.

FEATURES

Designed for specific sleeve and reinforcing bar combinations

Designed to fit over multiple reinforcing steel deformation and rib patterns

SPECIFICATIONS

Material: Steel

Table 1/1

Catalog Number	Rebar Size, Metric	Rebar Size, US	Rebar Size, Canada	Diameter 1 (Ø1)	Diameter 2 (Ø2)
RBS362211	36 mm	#11	35M	67 mm	44 mm
RBS362214	43 mm	#14	45M	80 mm	54 mm
RBS362218	57 mm	#18	55M	99 mm	67 mm
RBS36225	12 mm, 16 mm	#4, #5	10M, 15M	38 mm	19 mm
RBS36226	20 mm	#6	20M	41 mm	25 mm
RBS36227	22 mm	#7		44 mm	29 mm

Catalog Number	Rebar Size, Metric	Rebar Size, US	Rebar Size, Canada	Diameter 1 (Ø1)	Diameter 2 (Ø2)
RBS36228	25 mm	#8	25M	51 mm	32 mm
RBS36229	28 mm	#9	30M	57 mm	38 mm
RBS362210	32 mm	#10		60 mm	41 mm

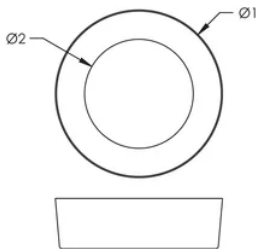
ADDITIONAL PRODUCT DETAILS

Contact nVent LENTON prior to purchasing. Metal caps should only be used by experienced installers.

Prior to installation, please read and understand all of the detailed instructions and safety notices provided in the nVent LENTON Cadweld Rebar Splicing System Instruction Manual.

Sizes not shown may be available by special order. Contact your nVent LENTON representative for more information.

DIAGRAMS



WARNING

nVent products shall be installed and used only as indicated in nVent's product instruction sheets and training materials. Instruction sheets are available at www.nvent.com and from your nVent customer service representative. Improper installation, misuse, misapplication or other failure to completely follow nVent's instructions and warnings may cause product malfunction, property damage, serious bodily injury and death and/or void your warranty.

North America

+1.800.753.9221

Option 1 – Customer Care

Option 2 – Technical

Support

Europe

Netherlands:

+31 800-0200135

France:

+33 800 901 793

Europe

Germany:

800 1890272

Other Countries:

+31 13 5835404

APAC

Shanghai:

+ 86 21 2412 1618/19

Sydney:

+61 2 9751 8500



Our powerful portfolio of brands:

CADDY

ERICO

HOFFMAN

ILSCO

SCHROFF

TRACHTE