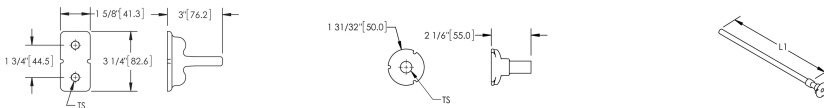


# Earthbridge DB, One Stud, Solid Round Steel, Straight



Earthbridges are assemblies made from a high-quality conductive earthpoint (connecting terminal) and various types of conductors. The nVent ERICO Cadweld exothermic connection process is used to combine them together, forming a highly corrosion resistant and long-lasting assembly.

## DIAGRAMS



## FEATURES

Long-lasting design

Low ground resistance and impedance

Superior electrical conductivity and resistance to corrosion

Electrically and mechanically robust and reliable

Easy to install

## SPECIFICATIONS

**Material:** Copper;Steel

**Conductor Type:** Solid Round Steel, Straight

Table 1/2

Catalog Number	Type	Earthpoint Type	Conductor Size	Length (L)	Diameter (Ø)	Thread Size (TS)
DB12K16S050H	DBKS	DB, One Stud	16 mm Diameter Solid	500mm	50 mm	M12

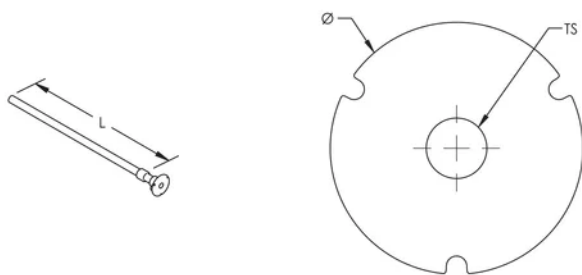
CatalogNumber	Type	EarthpointType	Conductor Size	Length (L)	Diameter (Ø)	Thread Size (TS)
DB10K16S050H	DBKS	DB, One Stud	16 mm Diameter Solid	500mm	50 mm	M10
DB16K16S050H	DBKS	DB, One Stud	16 mm Diameter Solid	500mm	50 mm	M16
DB10K16S050HG	DBKS	DB, One Stud	16 mm Diameter Solid	500mm	50 mm	M10
DB10KS12350	DBKS	DB, One Stud	12 mm Diameter Solid	350mm	50 mm	M10
DB12K16S050HG	DBKS	DB, One Stud	16 mm Diameter Solid	500mm	50 mm	M12
BT12K16S050HG	BTKS	B162, Two Stud	16 mm Diameter	500mm		M12

Table 2/2

Catalog Number	Rebar Assembly Type	Hardware Included	Earthbridge Application	Complies With
DB12K16S050H	Arc Welding to Rebar	Yes	Tunnel	EN IEC® 62561-1 Class H 100kA
DB10K16S050H	Arc Welding to Rebar	Yes	Tunnel	EN IEC® 62561-1 Class H 100kA
DB16K16S050H	Arc Welding to Rebar	Yes	Tunnel	EN IEC® 62561-1 Class H 100kA
DB10K16S050HG	Arc Welding to Rebar	Yes	Tunnel	EN IEC® 62561-1 Class H 100kA
DB10KS12350	Arc Welding to Rebar	Yes	Tunnel	EN IEC® 62561-1 Class H 100kA
DB12K16S050HG	Arc Welding to Rebar	Yes	Tunnel	EN IEC® 62561-1 Class H 100kA
BT12K16S050HG	Arc Welding to Rebar	Yes	Tunnel	EN IEC® 62561-1 Class H 100kA

DB-16-C-70-S-050-C		
DB	Earth Point	DB: 1 hole BT: 2 holes BF: 4 holes LU: M16 lug TA: tape
16	Thread Size	10: M10 12: M12 16: M16 40: Tape 40x5mm 30: Tape 30x4mm
C	Conductor Type	K: Steel Rond C: Y/G Cable T: Steel Bar F: Steel Bar 4mm N: NYY-O Cable H: N2XH-0 Cable
70	Conductor Size	12: D12mm 16: D16mm 30: 30x4mm 40: 40x5mm 50: 50mm <sup>2</sup> 70: 70mm <sup>2</sup> 95: 95mm <sup>2</sup>
S	Conductor Angle	S: 0° P: 90° A: 45°
050	Length (cm)	xxx
x	Termination (option if cable)	SR: Solid Round EP: Earthpoint perpendicular ES: Earthpoint straight TA: Tape of 100mm TP: Tape of 150mm LU: M16 lug
x	Bolts & Washer	- : No Hardware H: With Hardware
C	Packaging	- : by unit (Made-to-Stock) C: 5 pieces (Made-to-Order) G: 25 pieces (Made-to-Order)

## DIAGRAMS



**WARNING**

nVent products shall be installed and used only as indicated in nVent's product instruction sheets and training materials. Instruction sheets are available at [www.nvent.com](http://www.nvent.com) and from your nVent customer service representative. Improper installation, misuse, misapplication or other failure to completely follow nVent's instructions and warnings may cause product malfunction, property damage, serious bodily injury and death and/or void your warranty.

**North America**

+1.800.753.9221  
Option 1 – Customer Care  
Option 2 – Technical  
Support

**Europe**

Netherlands:  
+31 800-0200135  
France:  
+33 800 901 793

**Europe**

Germany:  
800 1890272  
Other Countries:  
+31 13 5835404

**APAC**

Shanghai:  
+ 86 21 2412 1618/19  
Sydney:  
+61 2 9751 8500



Our powerful portfolio of brands:

**CADDY   ERICO   HOFFMAN   ILSCO   SCHROFF   TRACHTE**