

# 1 Hole Offset Lug



## FEATURES

Provides an efficient bolting surface for grounding and power applications

Electrolytic grade copper

For use with nVent ERICO Cadweld type LA connections only

## SPECIFICATIONS

**Material:** Copper

**Finish:** Tinned

Table 1/2

Catalog Number	Type	Height (H)	Length (L)	Width (W)	Thickness (T)	A
B101CEOL	NEMA®	15.88 mm	63.5mm	25.4 mm	3.18 mm	12.7 mm
B305TC	Non-NEMA®	20 mm	91.4mm	30 mm	5 mm	15 mm

Table 2/2

Catalog Number	B	C	Hole Size (HS)	Angle (a)	Equivalent Conductor Size
B101CEOL	25.4 mm	22.23 mm	11.11 mm	45 °	80.63mm <sup>2</sup>
B305TC	33.78 mm	39.88 mm	17 mm	45 °	152.23mm <sup>2</sup>

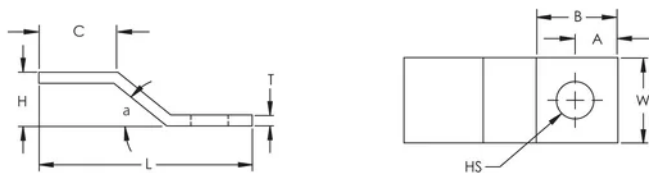
## ADDITIONAL PRODUCT DETAILS

---

For sizes not listed, contact us.

## DIAGRAMS

---



## WARNING

---

nVent products shall be installed and used only as indicated in nVent's product instruction sheets and training materials. Instruction sheets are available at [www.nvent.com](http://www.nvent.com) and from your nVent customer service representative. Improper installation, misuse, misapplication or other failure to completely follow nVent's instructions and warnings may cause product malfunction, property damage, serious bodily injury and death and/or void your warranty.

### North America

+1.800.753.9221

Option 1 – Customer Care

Option 2 – Technical

Support

### Europe

Netherlands:

+31 800-0200135

France:

+33 800 901 793

### Europe

Germany:

800 1890272

Other Countries:

+31 13 5835404

### APAC

Shanghai:

+ 86 21 2412 1618/19

Sydney:

+61 2 9751 8500



Our powerful portfolio of brands:

**CADDY**

**ERICO**

**HOFFMAN**

**ILSCO**

**SCHROFF**

**TRACHTE**