

# nVent CADDY Speed Link SLK with Y-Toggle



## CERTIFICATIONS



## FEATURES

Complete system includes wire, locking device and two pre-assembled toggle end fittings

Attaches to clearance holes in a variety of structures or hanging devices

Ideal for supporting lighting fixtures

## SPECIFICATIONS

<b>Wire Rope Diameter:</b>	1.5 mm
<b>Static Load Safety Factor:</b>	5:1
<b>Finish:</b>	Electrogalvanized
<b>Material:</b>	Steel;Zinc Alloy;Polypropylene
<b>Complies With:</b>	SMACNA HVAC-DCS

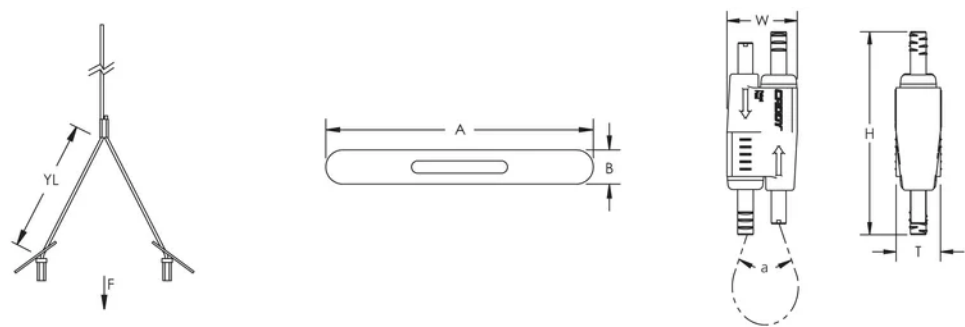
Table 1/1

Catalog Number	Article Number	Wire Rope Length	Wire Rope "Y" Length (YL)	A	B	Static Load
SLK15Y300L3R 2	196648	3m	0.3m	39 mm	5 mm	195N

CatalogNumber	Article Number	Wire Rope Length	Wire Rope "Y" Length (YL)	A	B	Static Load
SLK15Y500L3	196528	3m	0.5m	39 mm	5 mm	195N

**Thickness (T):** 12.5 mm  
**Width (W):** 19 mm  
**Height (H):** 55 mm  
**Angle (a):** 90 ° Max

### DIAGRAMS



### WARNING

nVent products shall be installed and used only as indicated in nVent's product instruction sheets and training materials. Instruction sheets are available at [www.nvent.com](http://www.nvent.com) and from your nVent customer service representative. Improper installation, misuse, misapplication or other failure to completely follow nVent's instructions and warnings may cause product malfunction, property damage, serious bodily injury and death and/or void your warranty.

#### North America

+1.800.753.9221  
 Option 1 – Customer Care  
 Option 2 – Technical Support

#### Europe

Netherlands:  
 +31 800-0200135  
 France:  
 +33 800 901 793

#### Europe

Germany:  
 800 1890272  
 Other Countries:  
 +31 13 5835404

#### APAC

Shanghai:  
 + 86 21 2412 1618/19  
 Sydney:  
 +61 2 9751 8500



Our powerful portfolio of brands:

**CADDY   ERICO   HOFFMAN   ILSCO   SCHROFF   TRACHTE**

