

# SASA Coupler with Mounting Plate, Double-Ended



Used in segmental pour applications. The addition of two form saving plates allows the coupler to be used in keyway applications where the coupler is attached to formwork at both ends. Permanent form saving plates allow easy attachment to the forms, eliminating costly damage to the forms.

## FEATURES

Designed to splice the same diameter bars where both bars can be rotated and they are not restricted in their axial direction

Durable mounting plates allow for easy attachment to forms

Built-in thread cover or screw-in plug protects internal threads from concrete paste contamination

Available in customer specified lengths

## SPECIFICATIONS

<b>Finish:</b>	Plain
<b>Material:</b>	Steel
<b>100% U.S. Domestic Content:</b>	Yes

Table 1/2

Catalog Number	Mounting Plate Shape	Rebar Size, Metric	Rebar Size, US	Rebar Size, Canada	Diameter (Ø)	Height (H)
EL25SASA0800	Square	25 mm	#8	25M	34 mm	57 mm
EL25SASA2400	Square	25 mm	#8	25M	34 mm	57 mm
EL25SASA3000	Square	25 mm	#8	25M	34 mm	57 mm

<b>CatalogNumber</b>	<b>Mounting Plate Shape</b>	<b>Rebar Size, Metric</b>	<b>Rebar Size, US</b>	<b>Rebar Size, Canada</b>	<b>Diameter (Ø)</b>	<b>Height (H)</b>
EL25SASA4800	Square	25 mm	#8	25M	34 mm	57 mm
EL25SASA5700	Square	25 mm	#8	25M	34 mm	57 mm
EL25SASA6000	Square	25 mm	#8	25M	34 mm	57 mm
EL28SASA2400	Square	28 mm	#9	30M	38 mm	64 mm
EL28SASA2800	Square	28 mm	#9	30M	38 mm	64 mm
EL28SASA3900	Square	28 mm	#9	30M	38 mm	64 mm
EL36SASA1200	Square	36 mm	#11	35M	48 mm	64 mm
EL36SASA1800	Square	36 mm	#11	35M	48 mm	64 mm
EL36SASA2300	Square	36 mm	#11	35M	48 mm	64 mm
EL36SASA2400	Square	36 mm	#11	35M	48 mm	64 mm
EL36SASA3000	Square	36 mm	#11	35M	48 mm	64 mm
EL36SASA3900	Square	36 mm	#11	35M	48 mm	64 mm
EL36SASA4400	Square	36 mm	#11	35M	48 mm	64 mm
EL36SASA7500	Square	36 mm	#11	35M	48 mm	64 mm
EL36SASA8500	Square	36 mm	#11	35M	48 mm	64 mm
EL36SASA9100	Square	36 mm	#11	35M	48 mm	64 mm
EL32SASA3000	Square	32 mm	#10		45 mm	64 mm
EL43TSASA2400	Round	43 mm	#14	45M	57 mm	114 mm

CatalogNumber	Mounting Plate Shape	Rebar Size, Metric	Rebar Size, US	Rebar Size, Canada	Diameter (Ø)	Height (H)
EL57TSASA2400	Round	57 mm	#18	55M	76 mm	127 mm

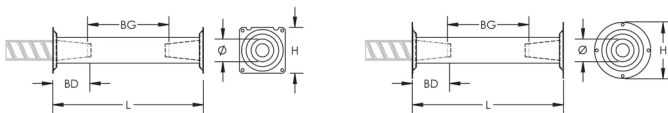
Table 2/2

Catalog Number	Length (L)	Bar Depth (BD)	Bar Gap (BG)	Unit Weight
EL25SASA0800	203mm	34mm	134mm	1.23 kg
EL25SASA2400	610mm	34mm	541mm	4.23 kg
EL25SASA3000	762mm	34mm	693mm	5.41 kg
EL25SASA4800	1219mm	34mm	1150mm	8.81 kg
EL25SASA5700	1448mm	34mm	1379mm	10.53 kg
EL25SASA6000	1524mm	34mm	1455mm	11.1 kg
EL28SASA2400	610mm	38mm	534mm	5.04 kg
EL28SASA2800	711mm	38mm	636mm	5.95 kg
EL28SASA3900	991mm	38mm	915mm	8.51 kg
EL36SASA1200	305mm	43mm	220mm	3.35 kg
EL36SASA1800	457mm	43mm	372mm	5.61 kg
EL36SASA2300	584mm	43mm	499mm	7.37 kg
EL36SASA2400	610mm	43mm	524mm	7.61 kg
EL36SASA3000	762mm	43mm	677mm	9.74 kg
EL36SASA3900	991mm	43mm	905mm	12.94 kg

Catalog Number	Length (L)	Bar Depth (BD)	Bar Gap (BG)	Unit Weight
EL36SASA4400	1118mm	43mm	1032mm	14.71 kg
EL36SASA7500	1905mm	43mm	1820mm	25.72 kg
EL36SASA8500	2159mm	43mm	2074mm	29.27 kg
EL36SASA9100	2311mm	43mm	2226mm	31.39 kg
EL32SASA3000	762mm	40mm	529mm	8.61 kg
EL43TSASA2400	610mm	56mm	498mm	11.22 kg
EL57TSASA2400	610mm	71mm	467mm	19.19 kg

**Designed to Meet:** AASHTO;ABNT NBR 8548:1984;ACI 318 Type 1 (125% Specified Yield);ACI 318 Type 2 (Specified Tensile);ACI 349;ACI 359;AS3600

## DIAGRAMS



## WARNING

nVent products shall be installed and used only as indicated in nVent's product instruction sheets and training materials. Instruction sheets are available at [www.nvent.com](http://www.nvent.com) and from your nVent customer service representative. Improper installation, misuse, misapplication or other failure to completely follow nVent's instructions and warnings may cause product malfunction, property damage, serious bodily injury and death and/or void your warranty.

**North America**

+1.800.753.9221

Option 1 – Customer Care

Option 2 – Technical

Support

**Europe**

Netherlands:

+31 800-0200135

France:

+33 800 901 793

**Europe**

Germany:

800 1890272

Other Countries:

+31 13 5835404

**APAC**

Shanghai:

+ 86 21 2412 1618/19

Sydney:

+61 2 9751 8500



Our powerful portfolio of brands:

**CADDY**

**ERICO**

**HOFFMAN**

**ILSCO**

**SCHROFF**

**TRACHTE**