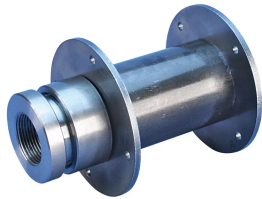


# P8 Position Coupler with Two Form Saving Plates



Used in segmental pour applications. The addition of two form saving plates allow the female end of the coupler to be used in keyway applications where the coupler is attached to formwork at both ends. Permanent form saving plates allow easy attachment to the forms, eliminating costly damage to the forms.

## FEATURES

Designed to splice the same diameter bars

Designed to splice two curved, bent or straight bars, when one bar can be rotated and where the ongoing bar is NOT free to move in its axial direction

Adjustability in the female end of the coupler allows the coupler to extend out to meet the taper-threaded reinforcing bar

## SPECIFICATIONS

**Finish:** Plain

**Material:** Steel

**100% U.S. Domestic Content:** Yes

Table 1/3

Catalog Number	Rebar Size, Metric	Rebar Size, US	Rebar Size, Canada	Diameter 1 (Ø1)	Diameter 2 (Ø2)	Length 1 (L1)
EL36S3P84700	36 mm	#11	35M	65 mm	114 mm	1234 mm
EL36S3P82400	36 mm	#11	35M	65 mm	114 mm	650 mm
EL36S3P83000	36 mm	#11	35M	65 mm	114 mm	802 mm
EL36S3P83900	36 mm	#11	35M	65 mm	114 mm	1031 mm

Table 2/3

Catalog Number	Length 2 (L2)	Bar Depth (BD)	Bar Gap 1 (BG1)	Bar Gap 2 (BG2)	Coupler Body (CB)	Unit Weight
EL36S3P84700	1300 mm	119mm	996mm	1062mm	1194mm	30.3 kg
EL36S3P82400	715 mm	43mm	565mm	630mm	610mm	15.79 kg
EL36S3P83000	868 mm	68mm	666mm	732mm	762mm	19.55 kg
EL36S3P83900	1096 mm	94mm	844mm	909mm	991mm	25.22 kg

Table 3/3

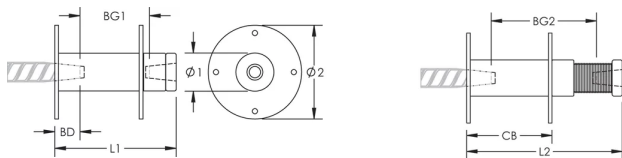
Catalog Number	Package Quantity
EL36S3P84700	1
EL36S3P82400	1
EL36S3P83000	
EL36S3P83900	

**Designed to Meet:** AASHTO;ABNT NBR 8548:1984;ACI 318 Type 1 (125% Specified Yield);ACI 318 Type 2 (Specified Tensile);ACI 349;ACI 359;AS3600

## ADDITIONAL PRODUCT DETAILS

Bar dimensions and weights listed may vary by region. Coupler sizes not shown may be available by special order. Contact your nVent LENTON representative for more information.

## DIAGRAMS



## WARNING

nVent products shall be installed and used only as indicated in nVent's product instruction sheets and training materials. Instruction sheets are available at [www.nvent.com](http://www.nvent.com) and from your nVent customer service representative. Improper installation, misuse, misapplication or other failure to completely follow nVent's instructions and warnings may cause

product malfunction, property damage, serious bodily injury and death and/or void your warranty.

**North America**

+1.800.753.9221  
Option 1 – Customer Care  
Option 2 – Technical  
Support

**Europe**

Netherlands:  
+31 800-0200135  
France:  
+33 800 901 793

**Europe**

Germany:  
800 1890272  
Other Countries:  
+31 13 5835404

**APAC**

Shanghai:  
+ 86 21 2412 1618/19  
Sydney:  
+61 2 9751 8500



Our powerful portfolio of brands:

CADDY   ERICO   HOFFMAN   ILSCO   SCHROFF   TRACHTE