

B161/B164 Earthpoint, Four Stud



FEATURES

Long-lasting design

Low ground resistance and impedance

Superior electrical conductivity and resistance to corrosion

Electrically and mechanically robust and reliable

Easy to install as a Prefabricated Earthbridge once nVent ERICO Cadweld welded to a piece of conductor

SPECIFICATIONS

Table 1/2

Catalog Number	Article Number	Material	Width 1 (W1)	Width 2 (W2)	Depth 1 (D1)	Depth 2 (D2)
B164Y1		Bronze	44.5 mm	82.55 mm	44.5mm	82.55mm
B164Y2		Bronze	44.5 mm	82.55 mm	44.5mm	82.55mm
B164Y3		Bronze	44.5 mm	82.55 mm	44.5mm	82.55mm
B164Y4		Bronze	44.5 mm	82.55 mm	44.5mm	82.55mm
B16412A	166060	Copper	44.5 mm	85 mm	44.5mm	85mm
B164Y5		Bronze	44.5 mm	82.55 mm	44.5mm	82.55mm

CatalogNumber	Article Number	Material	Width 1 (W1)	Width 2 (W2)	Depth 1 (D1)	Depth 2 (D2)
B1612Q		Brass	31.75 mm	63.5 mm	25.4mm	57.2mm
B1642Q		Brass	44.45 mm	82.55 mm	44.45mm	82.55mm
B16110B	166030	Copper	30 mm	65 mm	30mm	65mm
B164Y6		Bronze	44.5 mm	82.55 mm	44.5mm	82.55mm
B1649G		Bronze	44.5 mm	82.6 mm	44.5mm	82.6mm
B164Y8		Bronze	44.5 mm	82.6 mm	44.5mm	82.6mm
B1643Q		Brass	44.45 mm	82.55 mm	44.45mm	82.55mm
B1613Q		Brass	31.75 mm	63.5 mm	25.4mm	57.2mm

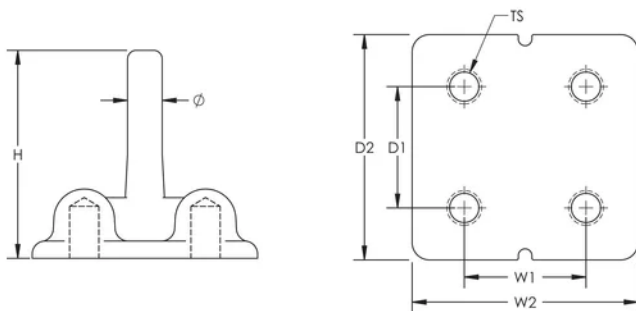
Table 2/2				
Catalog Number	Article Number	Height (H)	Diameter (Ø)	Thread Size (TS)
B164Y1		76.2 mm	6.2 mm	M12
B164Y2		76.2 mm	7.9 mm	M12
B164Y3		76.2 mm	9.1 mm	M12
B164Y4		76.2 mm	10.5 mm	M12
B16412A	166060	70 mm	10.7 mm	M12
B164Y5		76.2 mm	12.3 mm	M12
B1612Q		76.2 mm	13.46 mm	3/8" UNC
B1642Q		76.2 mm	13.46 mm	1/2" UNC
B16110B	166030	42 mm	14 mm	M10

Catalog Number	Article Number	Height (H)	Diameter (Ø)	Thread Size (TS)
B164Y6		76.2 mm	14.6 mm	M12
B1649G		76.2 mm	16.3 mm	M12
B164Y8		76.2 mm	17.8 mm	M12
B1643Q		76.2 mm	20.96 mm	1/2" UNC
B1613Q		76.2 mm	20.96 mm	3/8" UNC

ADDITIONAL PRODUCT DETAILS

Assemblies require conductors and nVent ERICO Cadweld connections, which must be ordered separately.

DIAGRAMS



WARNING

nVent products shall be installed and used only as indicated in nVent's product instruction sheets and training materials. Instruction sheets are available at www.nvent.com and from your nVent customer service representative. Improper installation, misuse, misapplication or other failure to completely follow nVent's instructions and warnings may cause product malfunction, property damage, serious bodily injury and death and/or void your warranty.

North America

+1.800.753.9221

Option 1 – Customer Care

Option 2 – Technical

Support

Europe

Netherlands:

+31 800-0200135

France:

+33 800 901 793

Europe

Germany:

800 1890272

Other Countries:

+31 13 5835404

APAC

Shanghai:

+ 86 21 2412 1618/19

Sydney:

+61 2 9751 8500



Our powerful portfolio of brands:

CADDY

ERICO

HOFFMAN

ILSCO

SCHROFF

TRACHTE