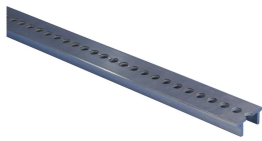


nVent ERIFLEX Flexbus Aluminum Perforated Profile

Data Solutions



CERTIFICATIONS



FEATURES

Optional brackets are available

Factory-punched head holes for quick assembly

RoHS compliant

SPECIFICATIONS

Table 1/2

Catalog Number	Article Number	Material	A	Hole Size (HS)	Height (H)	Length (L)
FLEXALPROF2 M	508100	Aluminum	12.5mm	8mm	15mm	2000mm

Table 2/2

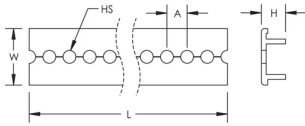
Catalog Number	Article Number	Width (W)	Unit Weight
FLEXALPROF2M	508100	35mm	0.9kg

ADDITIONAL PRODUCT DETAILS

Support kit and aluminum profile are sold separately.

When cable tray is used, we recommend installing a Flexbus Support at each extremity, in order to protect the Flexbus Conductor against potential sharp edges of the cable tray.

DIAGRAMS



WARNING

nVent products shall be installed and used only as indicated in nVent's product instruction sheets and training materials. Instruction sheets are available at www.nvent.com and from your nVent customer service representative. Improper installation, misuse, misapplication or other failure to completely follow nVent's instructions and warnings may cause product malfunction, property damage, serious bodily injury and death and/or void your warranty.



Our powerful portfolio of brands:

CADDY ERICO HOFFMAN ILSCO SCHROFF TRACHTE