

# Universal Restraint Clip



## CERTIFICATIONS



## FEATURES

Attaches cable brace to structure

Meets CEN/TS 17551:2021 requirements for Seismic Sway Bracing

## SPECIFICATIONS

Table 1/2

Catalog Number	Article Number	Material	Finish	Brace Size	Hole Size (HS)	Thickness (T)
CSBURC12	402199	Steel	Electrogalvanized	#12, #18, #36	14 mm	4.27 mm
CSBURC38	402198	Steel	Electrogalvanized	#12, #18, #36	11 mm	4.27 mm
CSBURC38SS	402522	Stainless Steel 316 (EN 1.4401)		#12, #18, #36	11 mm	4.27 mm
CSBURC58	402200	Steel	Electrogalvanized	#12, #18, #36	17 mm	4.27 mm

CatalogNumber	Article Number	Material	Finish	Brace Size	Hole Size (HS)	Thickness (T)
CSBURC58SS	402564	Stainless Steel 316 (EN 1.4401)		#12, #18, #36	17 mm	4.27 mm

Table 2/2

Catalog Number	Article Number	UL Listed Load	Certifications
CSBURC12	402199	3430N	cUL, ICC-ES (Seismic Cable Bracing), UL, ICC-ES, OSHPD/HCAI
CSBURC38	402198	3430N	cUL, ICC-ES, ICC-ES (Seismic Cable Bracing), UL, OSHPD/HCAI
CSBURC38SS	402522	2750N	
CSBURC58	402200	3430N	OSHPD/HCAI, ICC-ES (Seismic Cable Bracing), cUL, ICC-ES, UL
CSBURC58SS	402564	2750N	

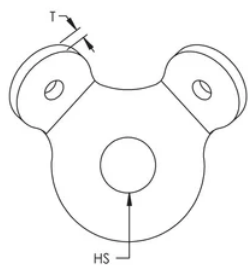
## ADDITIONAL PRODUCT DETAILS

Brace member is not included.

Mount to the structure using the center hole. Loop cable through the holes in the bent tabs and swage in place.

UL Loads		
Part Number	Brace Member	Load Rating
CSBURC38	CSB12CBL	1859 N
	CSB18CBL	3434 N
	CSB36CBL	8492 N
CSBURC12	CSB12CBL	1859 N
	CSB18CBL	3434 N
	CSB36CBL	8492 N
CSBURC58	CSB12CBL	1859 N
	CSB18CBL	3434 N
	CSB36CBL	8492 N

DIAGRAMS



WARNING

nVent products shall be installed and used only as indicated in nVent's product instruction sheets and training materials. Instruction sheets are available at [www.nvent.com](http://www.nvent.com) and from your nVent customer service representative. Improper installation, misuse, misapplication or other failure to completely follow nVent's instructions and warnings may cause product malfunction, property damage, serious bodily injury and death and/or void your warranty.

North America

+1.800.753.9221  
Option 1 – Customer Care  
Option 2 – Technical  
Support

Europe

Netherlands:  
+31 800-0200135  
France:  
+33 800 901 793

Europe

Germany:  
800 1890272  
Other Countries:  
+31 13 5835404

APAC

Shanghai:  
+ 86 21 2412 1618/19  
Sydney:  
+61 2 9751 8500



Our powerful portfolio of brands:

CADDY   ERICO   HOFFMAN   ILSCO   SCHROFF   TRACHTE

