

# nVent CADDY Speed Link SLS Locking Device



## CERTIFICATIONS



## FEATURES

Single barrel locking device allows for quick prefabrication of strut or brackets

Push-on nut quickly and securely installs to strut or bracket to keep the locking device in position and eases installation

Finger tightening of nut secures the locking device into position without tools

Installs in strut profiles without the need to insert fingers or tools into the strut

Push-on nut guides the cable into the locking device and brings stability to the support

Installs with open side of the strut channel facing up or down for more flexibility

## SPECIFICATIONS

**Material:** Steel;Polypropylene;Zinc Alloy

Table 1/2

Catalog Number	Article Number	Wire Rope Diameter	Thread Size (TS)	Height 1 (H1)	Height 2 (H2)	Width (W)
SLS2C50	196739	2 mm	M8	53mm	43.5mm	16 mm

CatalogNumber	Article Number	Wire Rope Diameter	Thread Size (TS)	Height 1 (H1)	Height 2 (H2)	Width (W)
SLS3C50	196740	3 mm	M12	53mm	46.5mm	20 mm

Table 2/2

Catalog Number	Article Number	Thickness (T)	Hole Size (HS)	Slot Size (SS)
SLS2C50	196739	4 mm Max	8 - 10 mm	8 x 6.5 mm - 8 x 10 mm
SLS3C50	196740	6 mm Max	12 - 14 mm	12 x 10 mm - 12 x 14 mm

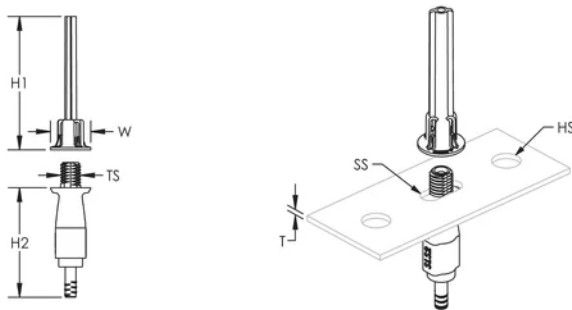
## ADDITIONAL PRODUCT DETAILS

The 2 mm locking device is compatible with C-Channel Types E0 and E0L.

The 3 mm locking device is compatible with C-Channel Types E1, E2, E2L, E3, E4, E5, Strut Channel Type C, Slotted, Strut Channel Type A, Slotted, Strut Channel Type AS, Perforated, Strut Channel Type CC, Slotted, Strut Channel Type AA, Slotted.

Locking devices are only to be used with nVent CADDY Speed Link wire spools and accessories with the same specified Wire Rope Diameter as the locking device. Do not use with any other wires.

## DIAGRAMS



## WARNING

nVent products shall be installed and used only as indicated in nVent's product instruction sheets and training materials. Instruction sheets are available at [www.nvent.com](http://www.nvent.com) and from your nVent customer service representative. Improper installation, misuse, misapplication or other failure to completely follow nVent's instructions and warnings may cause product malfunction, property damage, serious bodily injury and death and/or void your warranty.

#### North America

+1.800.753.9221

Option 1 – Customer Care

Option 2 – Technical

Support

#### Europe

Netherlands:

+31 800-0200135

France:

+33 800 901 793

#### Europe

Germany:

800 1890272

Other Countries:

+31 13 5835404

#### APAC

Shanghai:

+ 86 21 2412 1618/19

Sydney:

+61 2 9751 8500



Our powerful portfolio of brands:

**CADDY**

**ERICO**

**HOFFMAN**

**ILSCO**

**SCHROFF**

**TRACHTE**

