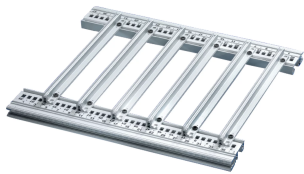


# Guide Rail Accessories for Heavy PCBs, Extra Strong



This reinforced guide rail for heavy PCBs of the type accessory, forms a reliable interface between the subrack mechanics and the sub-assemblies. The guide rails can additionally be bolted to the horizontal

## CERTIFICATIONS



## FEATURES

For especially heavy PCBs, plug-in units or frame type plug-in units

Mounting, for bolting to type H (heavy) and type R (rugged) horizontal rails only

Aluminium profile

## SPECIFICATIONS

<b>Material:</b>	Aluminum
<b>Finish:</b>	Anodized
<b>Works With:</b>	Subracks; Cases; Chassis
<b>Product Family:</b>	EuropacPRO; RatiopacPRO; RatiopacPRO AIR; CompacPRO; PropacPRO; MultipacPRO; Inpac
<b>Product Type:</b>	Guide Rail
<b>Type:</b>	Heavy Duty

Table 1/1

Catalog Number	Package Quantity	Board Depth	Groove Width	Color	Quick Ship
----------------	------------------	-------------	--------------	-------	------------

34562-881	1	160mm	2	Silver	No
34564-881	1	160mm	2.5	Silver	No
34562-882	1	220mm	2	Silver	No
34564-882	1	220mm	2.5	Silver	No
34562-883	1	280mm	2	Silver	No
34564-883	1	280mm	2.5	Silver	No
34562-884	1	340mm	2	Silver	No
34564-884	1	340mm	2.5	Silver	No
34562-885	1	400mm	2	Silver	No
34564-885	1	400mm	2.5	Silver	No

## ADDITIONAL PRODUCT DETAILS

---

Delivery is exclusively in standard pack quantity.

Please take into consideration that deliveries may be carried out in the stated SPQs (SPQ, e.g. 5 pieces, 10 pieces, 50 pieces, etc.). Differing order quantities (e.g. 2 pieces) may be changed to the next possible delivery quantity = Standard Pack Quantity.

## WARNING

---

nVent products shall be installed and used only as indicated in nVent's product instruction sheets and training materials. Instruction sheets are available at [www.nvent.com](http://www.nvent.com) and from your nVent customer service representative. Improper installation, misuse, misapplication or other failure to completely follow nVent's instructions and warnings may cause product malfunction, property damage, serious bodily injury and death and/or void your warranty.

### North America

All locations

+1.763.422.2661

Chat with us:

[nvent.com/schroff](https://nvent.com/schroff)

### Europe

Straubenhardt, Germany

+49.7082.794.0

Betschdorf, France

+33.3.88.90.64.90

Warsaw, Poland

+48.22.209.98.35

Assago, Italy

+39.02.932.7141

Chat with us:

[nvent.com/schroff](https://nvent.com/schroff)

### Asia

Shanghai, China

+86.21.2412.6943

Qingdao, China

+86.532.8771.6101

Singapore

+65.6768.5800

Shin-Yokohama, Japan

+81.45.476.0271

Chat with us:

[nvent.com/schroff](https://nvent.com/schroff)

### Middle East & India

Dubai, United Arab

Emirates

+971.4.378.1700

Bangalore, India

+91.80.6715.2001

Istanbul, Turkey

+90.216.250.7374

Chat with us:

[nvent.com/schroff](https://nvent.com/schroff)



Our powerful portfolio of brands:

**CADDY**

**ERICO**

**HOFFMAN**

**ILSCO**

**SCHROFF**

**TRACHTE**