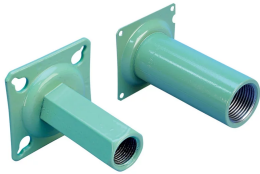


# SA Coupler with Mounting Plate, Coated



Coated reinforcing bar is used in place of plain reinforcing bars to protect against corrosion. Typical applications include bridges, parking structures, pavement, marine structures and repair work. nVent LENTON couplers and mechanical anchors are available in multiple coatings to meet specific job requirements.

## FEATURES

Designed to splice the same diameter bars where the second bar can be rotated and is not restricted in its axial direction

Durable mounting plates allow for easy attachment to forms

Built-in thread cover or screw-in plug protects internal threads from concrete paste contamination

## SPECIFICATIONS

<b>Finish Standard:</b>	ASTM® A775/A775M and AASHTO M284
<b>Finish:</b>	Epoxy Coated
<b>Material:</b>	Steel
<b>100% U.S. Domestic Content:</b>	Yes

Table 1/2

Catalog Number	Rebar Size, US	Rebar Size, Metric	Rebar Size, Canada	Hex Width (W)	Diameter (Ø)	Height (H)
EL12SAES	#4	12 mm	10M	17 mm		57 mm
EL16SAES	#5	16 mm	15M	22 mm		57 mm
EL20SAES	#6	20 mm	20M	27 mm		57 mm
EL22SAES	#7	22 mm		30 mm		57 mm

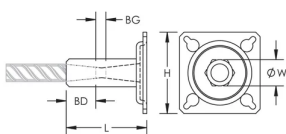
CatalogNumber	Rebar Size, US	Rebar Size, Metric	Rebar Size, Canada	Hex Width (W)	Diameter (Ø)	Height (H)
EL25SAES	#8	25 mm	25M		35 mm	57 mm
EL28SAES	#9	28 mm	30M		38 mm	64 mm
EL32SAES	#10	32 mm			44 mm	64 mm
EL36SAES	#11	36 mm	35M		48 mm	64 mm

Table 2/2

Catalog Number	Length (L)	Bar Depth (BD)	Bar Gap (BG)	Unit Weight
EL12SAES	49mm	15mm	12mm	0.14 kg
EL16SAES	64mm	22mm	12mm	0.18 kg
EL20SAES	79mm	28mm	17mm	0.27 kg
EL22SAES	88mm	32mm	17mm	0.36 kg
EL25SAES	93mm	34mm	17mm	0.45 kg
EL28SAES	98mm	38mm	16mm	0.5 kg
EL32SAES	102mm	40mm	16mm	0.68 kg
EL36SAES	107mm	43mm	16mm	0.82 kg

**Designed to Meet:** AASHTO;ABNT NBR 8548:1984;ACI 318 Type 1 (125% Specified Yield);ACI 318 Type 2 (Specified Tensile);ACI 349;ACI 359;AS3600

## DIAGRAMS



**WARNING**

nVent products shall be installed and used only as indicated in nVent's product instruction sheets and training materials. Instruction sheets are available at [www.nvent.com](http://www.nvent.com) and from your nVent customer service representative. Improper installation, misuse, misapplication or other failure to completely follow nVent's instructions and warnings may cause product malfunction, property damage, serious bodily injury and death and/or void your warranty.

**North America**

+1.800.753.9221  
Option 1 – Customer Care  
Option 2 – Technical  
Support

**Europe**

Netherlands:  
+31 800-0200135  
France:  
+33 800 901 793

**Europe**

Germany:  
800 1890272  
Other Countries:  
+31 13 5835404

**APAC**

Shanghai:  
+ 86 21 2412 1618/19  
Sydney:  
+61 2 9751 8500



Our powerful portfolio of brands:

**CADDY   ERICO   HOFFMAN   ILSCO   SCHROFF   TRACHTE**