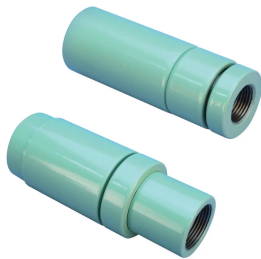


P9 Position Coupler, Coated



Coated reinforcing bar is used in place of plain reinforcing bars to protect against corrosion. Typical applications include bridges, parking structures, pavement, marine structures and repair work. nVent LENTON couplers and mechanical anchors are available in multiple coatings to meet specific job requirements.

FEATURES

Designed to splice the same diameter bars

Designed to splice two curved, bent or straight bars, when neither bar can be rotated and where the ongoing bar is free to move in its axial direction

SPECIFICATIONS

Finish Standard: ASTM® A775/A775M and AASHTO M284

Finish: Epoxy Coated

Material: Steel

Table 1/2

Catalog Number	Rebar Size, Metric	Rebar Size, US	Rebar Size, Canada	Diameter (Ø)	Length 1 (L1)	Length 2 (L2)
EL25P9NES	25 mm	#8	25M	46 mm	125 mm	140 mm
EL28P9NES	28 mm	#9	30M	64 mm	128 mm	144 mm
EL36P9NES	36 mm	#11	35M	64 mm	145 mm	160 mm

Table 2/2

Catalog Number	Bar Depth (BD)	Bar Gap 1 (BG1)	Bar Gap 2 (BG2)	Coupler Body (CB)	Unit Weight
EL25P9NES	34mm	57mm	72mm	86mm	1.19 kg

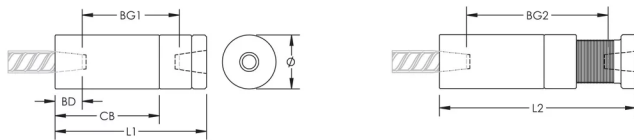
Catalog Number	Bar Depth (BD)	Bar Gap 1 (BG1)	Bar Gap 2 (BG2)	Coupler Body (CB)	Unit Weight
EL28P9NES	38mm	52mm	68mm	90mm	2.61 kg
EL36P9NES	43mm	59mm	74mm	106mm	4.3 kg

Designed to Meet: AASHTO;ABNT NBR 8548:1984;ACI 318 Type 1 (125% Specified Yield);ACI 318 Type 2 (Specified Tensile);ACI 349;ACI 359;AS3600

ADDITIONAL PRODUCT DETAILS

Bar dimensions and weights listed may vary by region. Coupler sizes not shown may be available by special order. Contact your nVent LENTON representative for more information.

DIAGRAMS



WARNING

nVent products shall be installed and used only as indicated in nVent's product instruction sheets and training materials. Instruction sheets are available at www.nvent.com and from your nVent customer service representative. Improper installation, misuse, misapplication or other failure to completely follow nVent's instructions and warnings may cause product malfunction, property damage, serious bodily injury and death and/or void your warranty.

North America

+1.800.753.9221
Option 1 – Customer Care
Option 2 – Technical
Support

Europe

Netherlands:
+31 800-0200135
France:
+33 800 901 793

Europe

Germany:
800 1890272
Other Countries:
+31 13 5835404

APAC

Shanghai:
+ 86 21 2412 1618/19
Sydney:
+61 2 9751 8500



Our powerful portfolio of brands:

CADDY ERICO HOFFMAN ILSCO SCHROFF TRACHTE