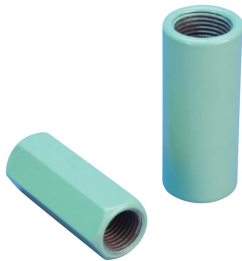


A2 Standard Coupler, Coated



Coated reinforcing bar is used in place of plain reinforcing bars to protect against corrosion. Typical applications include bridges, parking structures, pavement, marine structures and repair work. nVent LENTON couplers and mechanical anchors are available in multiple coatings to meet specific job requirements.

CERTIFICATIONS



FEATURES

Designed to splice the same diameter bars where the second bar can be rotated and is not restricted in its axial direction

Slim design maintains concrete cover

Installs quickly and easily

Multiple coatings available

SPECIFICATIONS

Coupler Protector: Standard

Material: Steel

Table 1/2

Catalog Number	Finish	Finish Standard	Rebar Size, Metric	Rebar Size, US	Rebar Size, Canada	Hex Width (W)
EL12A2NGV	Hot-Dip Galvanized	ASTM® A767 Class I	12 mm	#4	10M	17 mm
EL16A2NGV	Hot-Dip Galvanized	ASTM® A767 Class I	16 mm	#5	15M	22 mm

CatalogNumber	Finish	Finish Standard	Rebar Size, Metric	Rebar Size, US	Rebar Size, Canada	Hex Width (W)
EL20A2NGV	Hot-Dip Galvanized	ASTM® A767 Class I	20 mm	#6	20M	27 mm
EL22A2NGV	Hot-Dip Galvanized	ASTM® A767 Class I	22 mm	#7		
EL25A2NGV	Hot-Dip Galvanized	ASTM® A767 Class I	25 mm	#8	25M	
EL28A2NES	Epoxy Coated	ASTM® A775/A775M and AASHTO M284	28 mm	#9	30M	
EL28A2NGV	Hot-Dip Galvanized	ASTM® A767 Class I	28 mm	#9	30M	
EL32A2NGV	Hot-Dip Galvanized	ASTM® A767 Class I	32 mm	#10		
EL36A2NES	Epoxy Coated	ASTM® A775/A775M and AASHTO M284	36 mm	#11	35M	
EL36A2NGV	Hot-Dip Galvanized	ASTM® A767 Class I	36 mm	#11	35M	
EL40A2NGV	Hot-Dip Galvanized	ASTM® A767 Class I	40 mm			
EL43TA2NGV	Hot-Dip Galvanized	ASTM® A767 Class I	43 mm	#14	45M	
EL57TA2NGV	Hot-Dip Galvanized	ASTM® A767 Class I	57 mm	#18	55M	
EL50TA2NGV	Hot-Dip Galvanized	ASTM® A767 Class I	50 mm			

Table 2/2

Catalog Number	Diameter (Ø)	Length (L)	Bar Depth (BD)	Bar Gap (BG)	Unit Weight
EL12A2NGV		42mm	15mm	12mm	0.06 kg
EL16A2NGV		56mm	22mm	12mm	0.12 kg
EL20A2NGV		72mm	28mm	16mm	0.24 kg

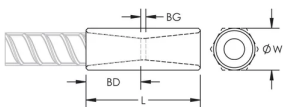
Catalog Number	Diameter (Ø)	Length (L)	Bar Depth (BD)	Bar Gap (BG)	Unit Weight
EL22A2NGV	32 mm	81mm	32mm	17mm	0.35 kg
EL25A2NGV	36 mm	86mm	34mm	18mm	0.45 kg
EL28A2NES	40 mm	92mm	38mm	16mm	0.58 kg
EL28A2NGV	40 mm	92mm	38mm	16mm	0.58 kg
EL32A2NGV	45 mm	97mm	40mm	17mm	0.76 kg
EL36A2NES	50 mm	102mm	43mm	16mm	0.99 kg
EL36A2NGV	50 mm	102mm	43mm	16mm	0.99 kg
EL40A2NGV	55 mm	127mm	55mm	17mm	1.38 kg
EL43TA2NGV	60 mm	137mm	56mm	25mm	1.92 kg
EL57TA2NGV	80 mm	168mm	71mm	26mm	4.14 kg
EL50TA2NGV	70 mm	167mm	71mm	25mm	3 kg

Designed to Meet: AASHTO;ABNT NBR 8548:1984;ACI 318 Type 1 (125% Specified Yield);ACI 318 Type 2 (Specified Tensile);ACI 349;ACI 359;AS3600

ADDITIONAL PRODUCT DETAILS

Bar dimensions and weights listed may vary by region. Coupler sizes not shown may be available by special order. Contact your nVent LENTON representative for more information.

DIAGRAMS



WARNING

nVent products shall be installed and used only as indicated in nVent's product instruction sheets and training materials. Instruction sheets are available at www.nvent.com and from your nVent customer service representative. Improper installation, misuse, misapplication or other failure to completely follow nVent's instructions and warnings may cause product malfunction, property damage, serious bodily injury and death and/or void your warranty.

North America

+1.800.753.9221
Option 1 – Customer Care
Option 2 – Technical
Support

Europe

Netherlands:
+31 800-0200135
France:
+33 800 901 793

Europe

Germany:
800 1890272
Other Countries:
+31 13 5835404

APAC

Shanghai:
+ 86 21 2412 1618/19
Sydney:
+61 2 9751 8500



Our powerful portfolio of brands:

CADDY ERICO HOFFMAN ILSCO SCHROFF TRACHTE