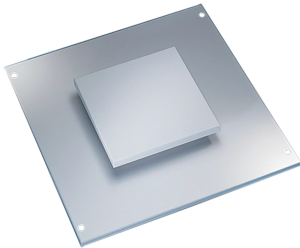


# ProLine G2 Pagoda Tops



Pagoda tops can be used on the top of a modular enclosure for active cooling. The design features a drip-proof raised pagoda vent with a 115-volt integral axial exhaust fan, and includes gasket seals to maintain a NEMA 12 enclosure rating.

## FEATURES

Maintains NEMA 12 Type rating on enclosure when installed

Drip-protected, raised pagoda vent

Integral axial exhaust fan for active cooling

Pagoda Tops 1200 mm and greater in width have one drip protected, raised pagoda vent opening positioned over one side that can be oriented for right or left ventilation

Seamless polyurethane gasket between top and frame (UL component recognized) provides a water-tight, dust-tight seal against moisture and contaminants

Includes four M12 hex bolts for installation

Lifting eyes (not included) can be used instead of bolts

SPECIFICATIONS

**Thickness:** 1.9mm  
**Color:** Light Gray  
**Finish:** Powder Coated  
**Color Code:** RAL 7035

Table 1/1			
Catalog Number	Article Number	Material	Quick Ship
P2TP104	32673	Mild Steel	No
P2TP105	32674	Mild Steel	No
P2TP106	32676	Mild Steel	No
P2TP108	32677	Mild Steel	No
P2TP124	32678	Mild Steel	No
P2TP125	32682	Mild Steel	No
P2TP126	32683	Mild Steel	No
P2TP128	32684	Mild Steel	No
P2TP164	32685	Mild Steel	No
P2TP165	32686	Mild Steel	No
P2TP166	32687	Mild Steel	No
P2TP168	32688	Mild Steel	No
P2TP185	32692	Mild Steel	No
P2TP186	32693	Mild Steel	No
P2TP188	32694	Mild Steel	No
P2TP45	32695	Mild Steel	No

Catalog Number	Article Number	Material	Quick Ship
P2TP46	32696	Mild Steel	No
P2TP64	32697	Mild Steel	No
P2TP65	32698	Mild Steel	No
P2TP66	32703	Mild Steel	No
P2TP68	32704	Mild Steel	No
P2TP810	32705	Mild Steel	No
P2TP84	32706	Mild Steel	No
P2TP85	32707	Mild Steel	No
P2TP86	32712	Mild Steel	No
P2TP88	32713	Mild Steel	No

## WARNING

nVent products shall be installed and used only as indicated in nVent's product instruction sheets and training materials. Instruction sheets are available at [www.nvent.com](http://www.nvent.com) and from your nVent customer service representative. Improper installation, misuse, misapplication or other failure to completely follow nVent's instructions and warnings may cause product malfunction, property damage, serious bodily injury and death and/or void your warranty.



Our powerful portfolio of brands:

CADDY   ERICO   HOFFMAN   ILSCO   SCHROFF   TRACHTE